

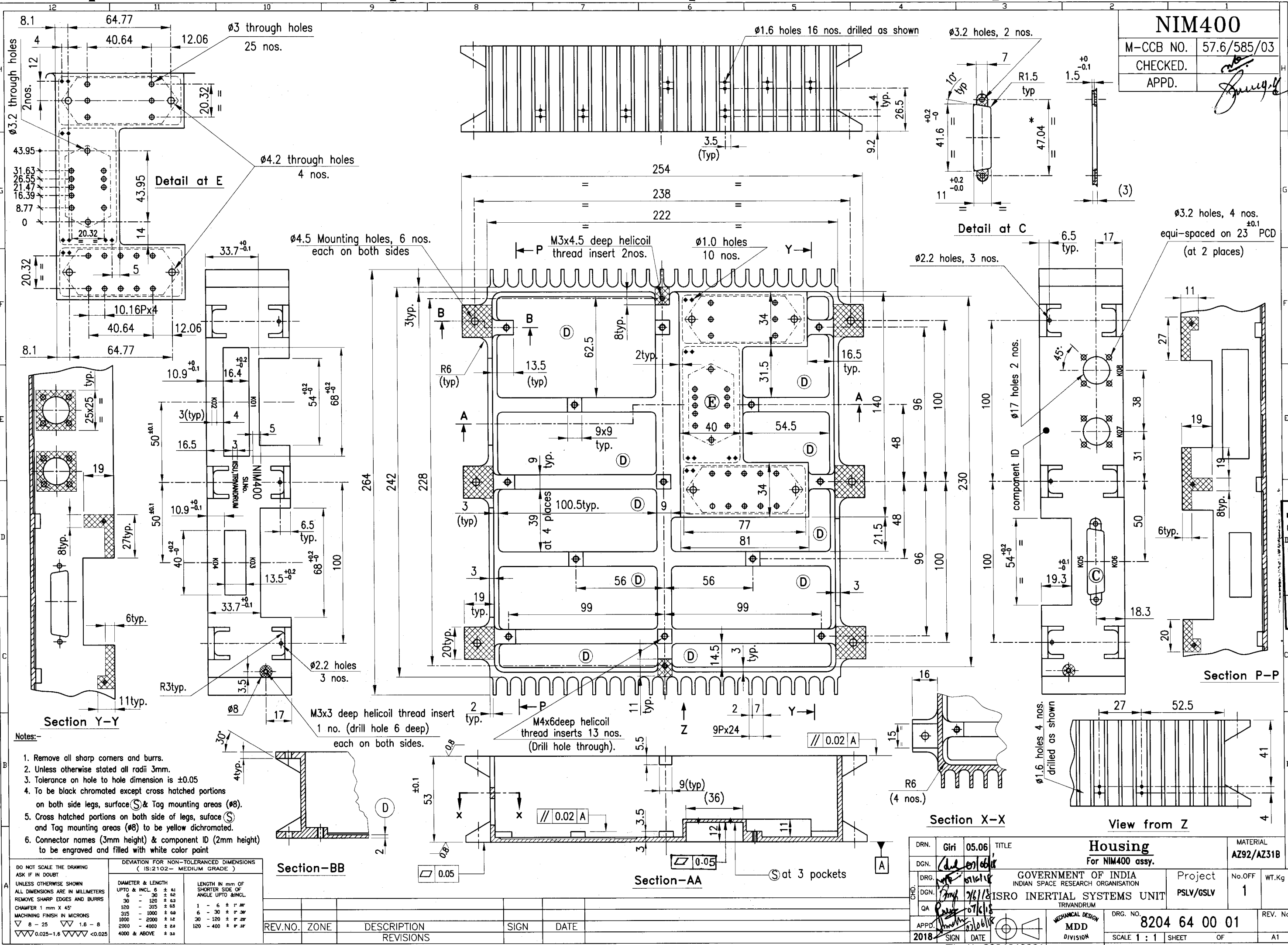
NIM400

M-CCB NO. 57.6/585/03

CHECKED.

APPD.

[Signature]



- Notes:-
1. Remove all sharp corners and burrs.
 2. Unless otherwise stated all radii 3mm.
 3. Tolerance on hole to hole dimension is ± 0.05
 4. To be black chromated except cross hatched portions on both side legs, surface \textcircled{S} & Tag mounting areas ($\textcircled{\#}$).
 5. Cross hatched portions on both side of legs, surface \textcircled{S} and Tag mounting areas ($\textcircled{\#}$) to be yellow dichromated.
 6. Connector names (3mm height) & component ID (2mm height) to be engraved and filled with white color paint

DEVIATION FOR NON-TOLERANCED DIMENSIONS (IS:2102 - MEDIUM GRADE)	
DIAMETER & LENGTH UPTO & INCL. 6	± 0.1
6 - 30	± 0.2
30 - 120	± 0.3
120 - 315	± 0.5
315 - 1000	± 0.8
1000 - 2000	± 1.2
2000 - 4000	± 2.0
4000 & ABOVE	± 3.0

REV. NO.	ZONE	DESCRIPTION REVISIONS	SIGN	DATE

DRN.	Giri	05.06	TITLE	Housing		MATERIAL	AZ92/AZ31B
DGN.	<i>[Signature]</i>		For NIM400 assy.				
DRG.	<i>[Signature]</i>		GOVERNMENT OF INDIA		Project	No. OFF	WT. Kg
DGN.	<i>[Signature]</i>		INDIAN SPACE RESEARCH ORGANISATION		PSLV/GSLV	1	
QA	<i>[Signature]</i>		ISRO INERTIAL SYSTEMS UNIT				
APPD.	<i>[Signature]</i>		TRIVANDRUM		DRG. NO.	8204 64 00 01	REV. No.
2018	SIGN	DATE	MECHANICAL DESIGN MDD DIVISION		SCALE	1 : 1	SHEET OF A1

ORIGINAL