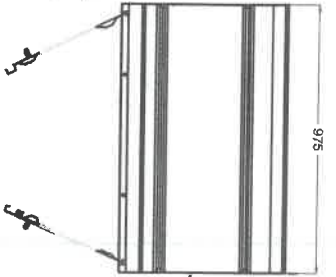


# ESTD - SS - CUPBOARD

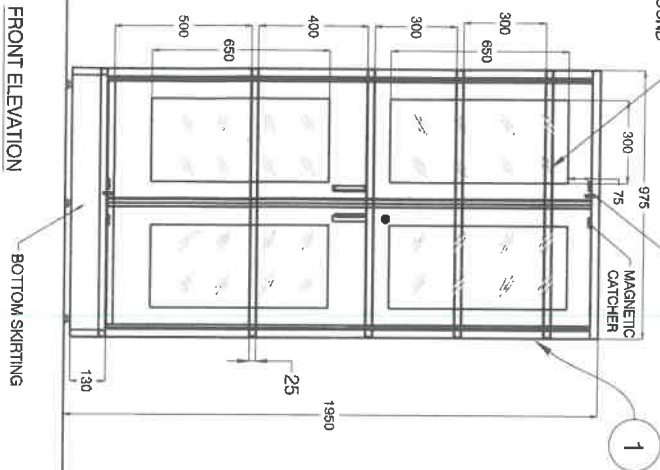
NOTE:  
 1) ENTIRE UNIT IN SS MATT FINISH  
 2) LOAD CAPACITY OF EACH SHELF = 50 KG (UDL)

TOP ELEVATION



6MM THK CLEAR  
TOUGHENED GLASS WITH  
RUBBER SLEEVE  
ALROUND

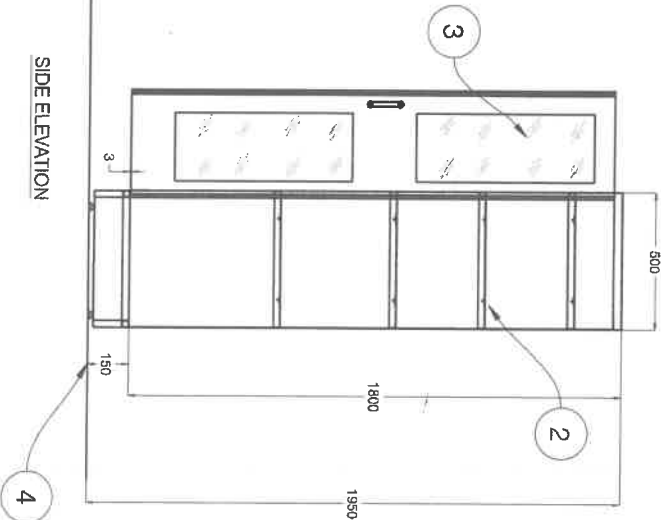
TOWER BOLT  
MAGNETIC  
CATCHER



FRONT ELEVATION

BOTTOM SKIRTING

SIDE ELEVATION



BILL OF MATERIAL:	
1	ENTIRE UNIT IN 1.2MM THICK SS 304 GRADE WITH 100MM SKIRTING IN 25X25 SS TUBE STRUCTURE AT BASE.
2	FIXED SHELVES IN 1.2MM THICK SS 304 GRADE BENDING AS PER DRAWING -04 NOS.
3	DOORS IN 1.2MM THICK SS 304 GRADE WITH 6MM THK CLEAR TOUGHENED GLASS TO BE FIX AS PER DRAWING AND INCLUDES HEAVY DUTY SS HANDLE, 7 LEVER LOCK WITH FLAT KEYS, TOWER BOLT, MAGNETIC CATCHERS.
4	SS LEVELERS-06 NOS.
5	GROUNDING CHORD

Drawing No: LPSCB/SPISG/SPMD-07-24/02

NOTE: All dimensions in mm

*Handwritten signature*

*Handwritten signature*

*Handwritten signature*