

1. Item description, dimension and quantity

protruding head titanium Maxibolts / Ti-Matic Blindbolts & Self-plugging Aerospace Aluminium Rivet

Table: Item description

Line item	S. No.	Description	Quantity in Nos	Compatible Installation tool with nose assembly*	Spare nose assembly#
1.	1.1	Part no: CR7773S04_01EE or UBP-MV04-01ACW or equivalent	20000	02 nos.	02 nos.
	1.2	Part no: CR7773S04_02EE or UBP-MV04-02ACW or equivalent	5000		
2.	2.1	Part no: CR7773S05_01EE or UBP-MV05-01ACW or equivalent	10000	02 nos.	02 nos.
	2.2	Part no: CR7773S05_02EE or UBP-MV05-02ACW or equivalent	5000		
	2.3	Part no: CR7773S05_03EE or UBP-MV05-03ACW or equivalent	2000		
3.	3.1	Part no: 4002-0506 or equivalent	4000	02 nos.	02 nos.
	3.2	Part no: 4002-0508 or equivalent	20000		
	3.3	Part no: 4002-05010 or equivalent	2000		

Quantity tolerance: +/-5%

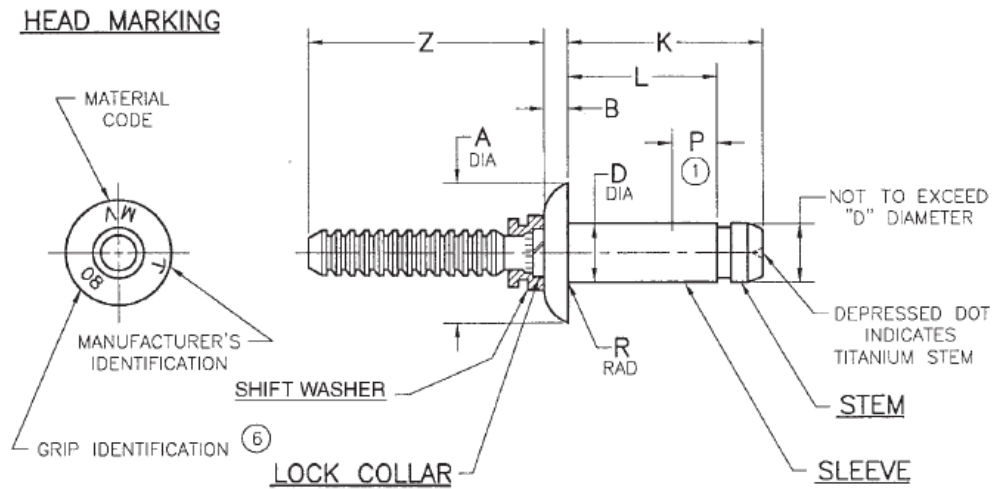
* There are **three line items** of rivets in the above table (Line item 1 – S. No. 1.1 & 1.2; Line item 2 – S. No. 2.1, 2.2 & 2.3; Line item – S. No. 3.1, 3.2 & 3.3). The vendor has to supply **compatible installation tool with nose assembly**, qty- 02 numbers, for **each line item** of rivets.

02 nos. spare nose assembly has to be supplied for **each line item**.

2. Technical details

a) Ti rivets

MAXIBOLT

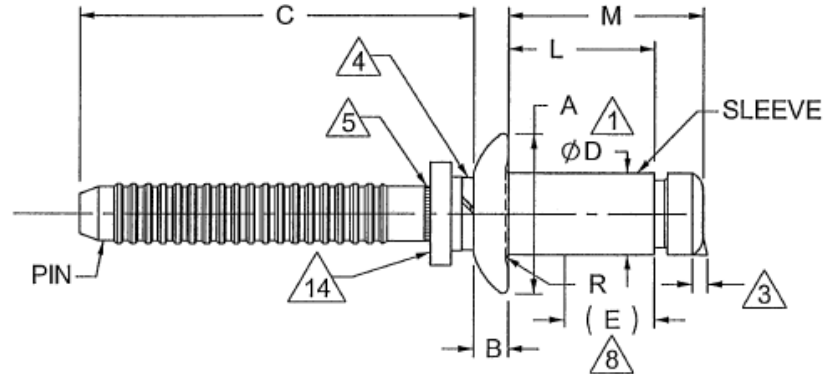
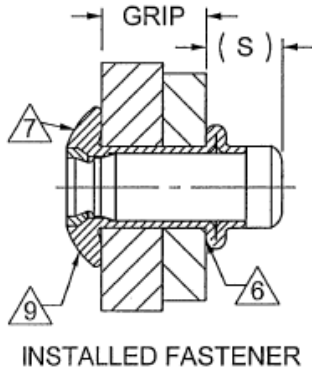


Dia. Dash No.	D ±.001 ^③	A	B	P Max	R Max	Z Min
-04	.128	.238/.262	.052/.062	.190	.010	.812
-05	.163	.296/.328	.067/.077	.215	.010	.844
-06	.198	.356/.394	.080/.090	.250	.015	.875
-08	.259	.475/.525	.107/.117	.305	.018	1.000


Grip Dash No.	Grip Limits				-04 Diameter		-05 Diameter	
	Overlap Min	1/16 Range ^④		Overlap Max	L Ref K Max		L Ref K Max	
		Min	Max					
-01	—	.031	.095	.111	.320	.392	.274	.414
-02	.084	.094	.157	.173	.383	.455	.336	.476
-03	.146	.156	.220	.236	.445	.517	.398	.539

OR

TI-MATIC BLINDBOLT



PART NUMBER	NOM. DIA.	A HEAD DIA.	B HEAD HEIGHT ±.005	C MIN	D SLEEVE DIA ±.001
UBP-MV04-()	-04	.262 .238	.057	.812	.128
UBP-MV05-()	-05	.328 .296	.072	.844	.163

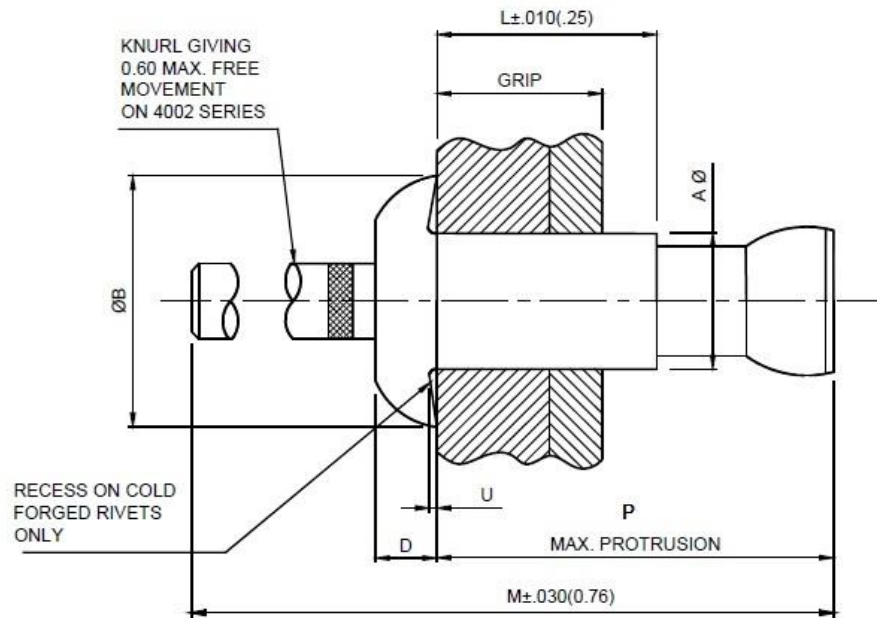
GRIP DASH NO.	DESIGN GRIP RANGE		OVERLAP GRIP MAX 	04		05	
	MIN.	MAX		L REF	M MAX	L REF	M MAX
01	.031	.095	.111	.223	.330	.274	.414
02	.093	.157	.173	.285	.392	.336	.476
03	.156	.220	.236	.348	.455	.398	.539

FEATURES: -

High strength, Pull type, Positive mechanical lock, Protruding head, Titanium, Single action installation (95KSI shear)

b) Al rivets

SELF PLUGGING SNAP HEAD RIVETS TYPE



TECHNICAL SPECIFICATIONS:-

01) Rivet Material: Body – Aluminium alloy L86

Stem – Al D.T.D 5124/7075

02) Finish: Anodised & prelubricated

03) Head type: Snap head type

04) Minimum ultimate single shear strength: 340 kgf

05) Dimensions of the rivet as per below tables:

Table-1

Sl. No.	Description	Dimensions		Remarks
		Metric (mm)	Imperial (Inches)	
01	'A' diameter	4.0	5/32	
02	'B' Diameter	6.35	1/4	
03	'D'	1.19 / 1.45	0.047 / 0.057	
04	'U' max	0.20	0.008	

Table-2

Sl. No.	Equivalent Part number	Dimensions (mm / Inches)				Remarks
		'L'	Grip range	'M'	'P'	
01	4002-0506	4.75 / 0.187	0.51-1.98 / 0.020-0.078	33.02 / 1.30	10.9 / 0.43	
02	4002-0508	6.35 / 0.250	1.19-3.58 / 0.047-1.141	36.2 / 1.425	14.0 / 0.55	
03	4002-0510	7.92 / 0.312	2.77-5.16 / 0.109-0.203	42.16 / 1.660	18.80 / 0.74	

2.1 Technical and commercial specification for both **Ti rivets & Al rivets**

- 1) There are total **3 line items** as per **table: “item description”**, each having sub-sets.
- 2) 02 numbers of compatible installation tool with nose assembly must be supplied for each line item.
- 3) 02 numbers of spare nose assembly must be supplied for each line item.
- 4) Vendor has to submit quote for installation tools & spare nose assembly along with rivets for **each line item**. Partial quotation (without installation tool, spare nose assembly) **will not be entertained**.
- 5) ISRO / URSC reserves the right to place multiple orders based on **L1** for each line item.
- 6) OEMS (Manufacturers) and Vendors / Suppliers Authorized to source from the Manufacturer will be considered. Necessary Certificate from the Manufacturer shall be enclosed along with quote.
- 7) Drawing attached for reference only.
- 8) Catalogue / Data sheet for the quoted parts to be submitted along with the quotation.
- 9) Party / Vendor / Supplier / Manufacturer shall supply the test specimen in case of requirement by URSC, before shipment.
- 10) Test reports must indicate the source of manufacturing.
- 11) Source of supply / Manufacturer / Principal to be mentioned in the quote.
- 12) The following original test certificates / reports from the manufacturer should be provided and it should indicate the source of manufacturing / testing and get the approval of URSC before the shipment.
 - i) Certificate of conformity / Certificate of compliance
 - ii) Chemical composition of materials
 - iii) Test reports of mechanical performance (Single shear and ultimate tensile)
 - iv) Installed weight for -1000- nos.
- 13) All specifications as per the indent must be conformed while quoting.
- 14) Drawing to be sent to us for approval before manufacturing.
- 15) Material to be shipped only after approval of all inspection reports.
- 16) Supply quantity tolerance of +/- 5 % is permitted.
- 17) Items have to be packed in the quantity of 1000's individually with proper identification like Purchase Order number, batch number, part number, size, quantity etc.
- 18) Compliance matrix consisting of all technical specifications as per the indent to be provided in the quote, else your quote will not be considered.
- 19) Maximum no. of shipments permitted is **Two** only.