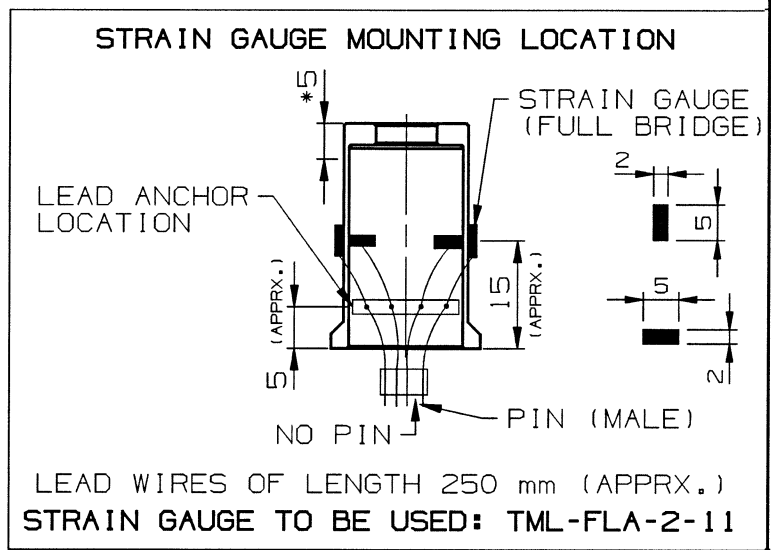
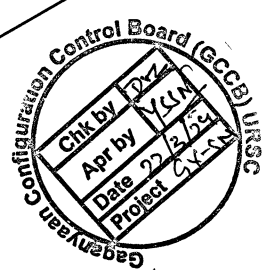
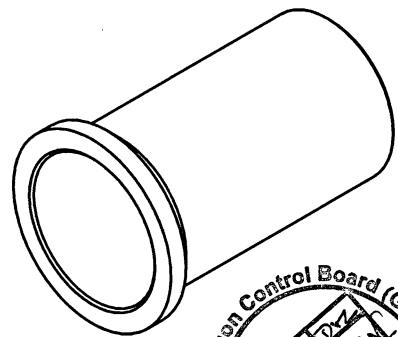
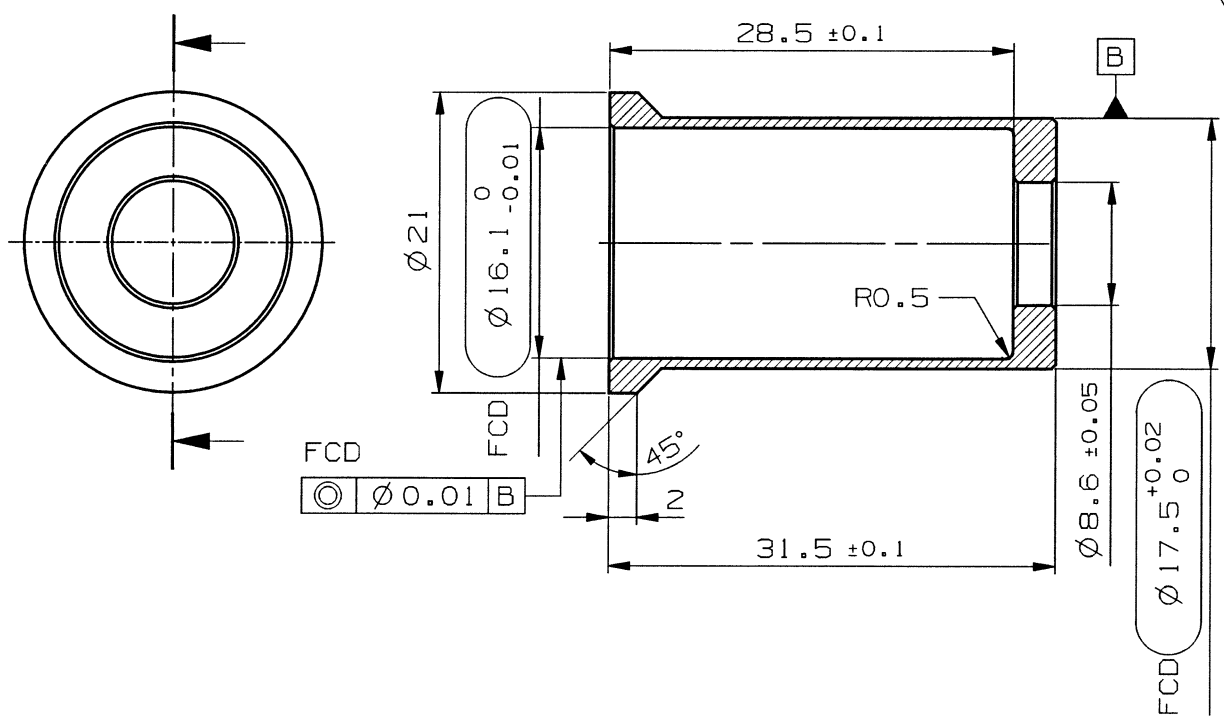


REV NO	NOTES OF REVISION	ZONE
00	BASE LINE DRAWING	N/A

3.2



- NOTE:**
- JOB ID BY TAG.
  - REFER: ACD-ASSEMBLY CRITICAL DIMENSION.  
FCD-FUNCTIONALLY CRITICAL DIMENSION.
  - LOAD CAP SHOULD BE TESTED FOR 1200 kg.
  - \*DO NOT PUT ANY MATERIAL (LIKE TAPE, STRAIN GAUGE etc).

1	LOAD CAP	1	Ti6AL4V	8.45 gm
SL. No.	DESCRIPTION	QTY.	MATL.	MASS
*GENERAL TOLERANCE AS PER ISO 2768-m (DIMENSIONS BELOW 0.5mm TO BE ACHIEVED BY BEST POSSIBLE METHOD) *DO NOT SCALE THE DRAWING UNLESS OTHERWISE STATED. *DIMENSIONS ARE IN mm UNLESS OTHERWISE STATED. *REMOVE SHARP EDGES.		<b>TITLE</b> <b>LOAD CAP</b> (PANEL HOLD DOWN ASSY.)		<b>SCALE</b> <b>2:1</b>
APPROVED	NAME SIGN DATE	भारत सरकार-अन्तरिक्ष विभाग यू.आर.राव उपग्रह केन्द्र बंगलूरु-560 017		
DESIGNER	NAME SIGN DATE	GOVERNMENT OF INDIA-DEPARTMENT OF SPACE U.R. RAO SATELLITE CENTRE BENGALURU - 560 017		
MOD. CHKD	NAME SIGN DATE	PROJECT	GROUP	DRG NO.
DRG. CHKD	NAME SIGN DATE	GAGANYAAN	SMG	ISAC-SCMG-GYAN-SD-32013/000
DRAWN	SUDARSHAN			<b>SHEET</b> 1 OF 1

INDENT NO.: 8462

OLD DWG. No.: ISAC-SCMG-GT11-SA-01051/001

THIS DRAWING/DOCUMENT IS COPYRIGHT AND THE PROPERTY OF "U R RAO SATELLITE CENTRE". IT MUST NOT BE COPIED IN WHOLE OR IN PART, USED FOR MANUFACTURE OR OTHERWISE DISCLOSED WITHOUT PRIOR WRITTEN CONSENT OF U R RAO SATELLITE CENTRE.