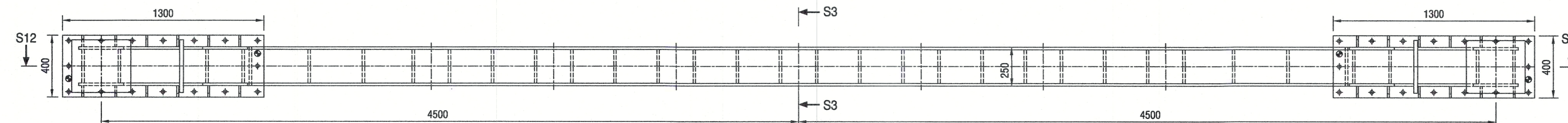
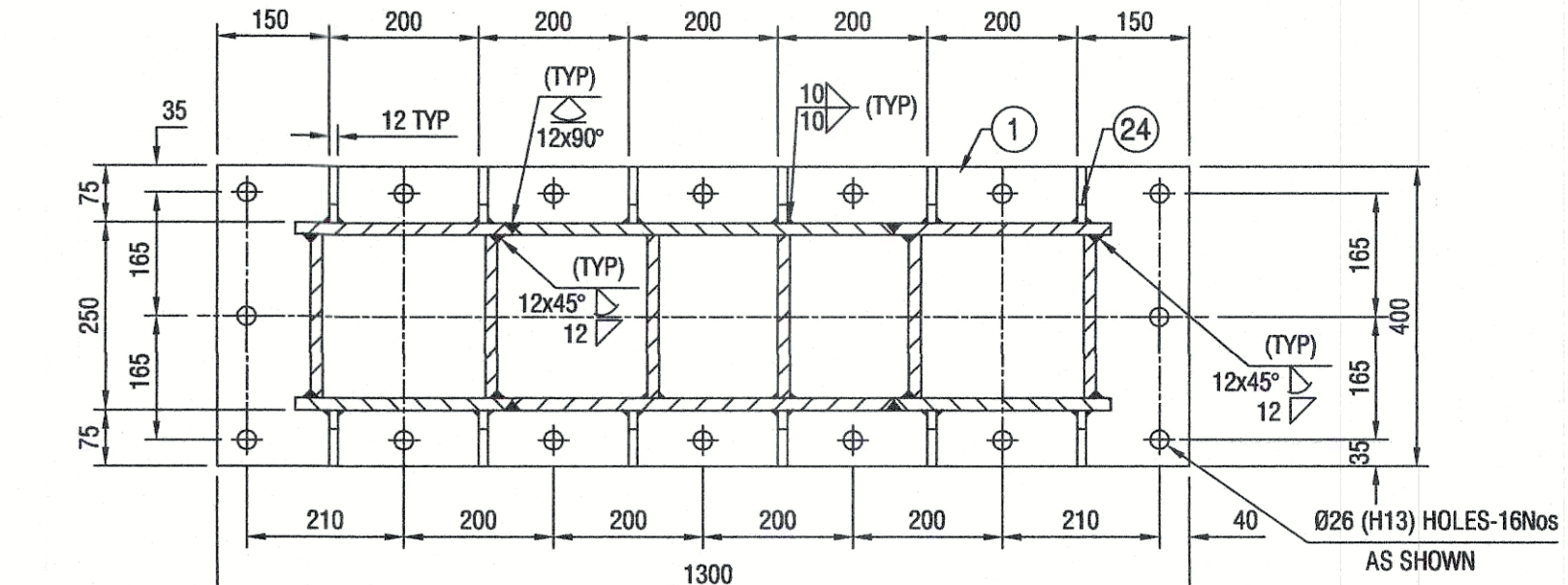


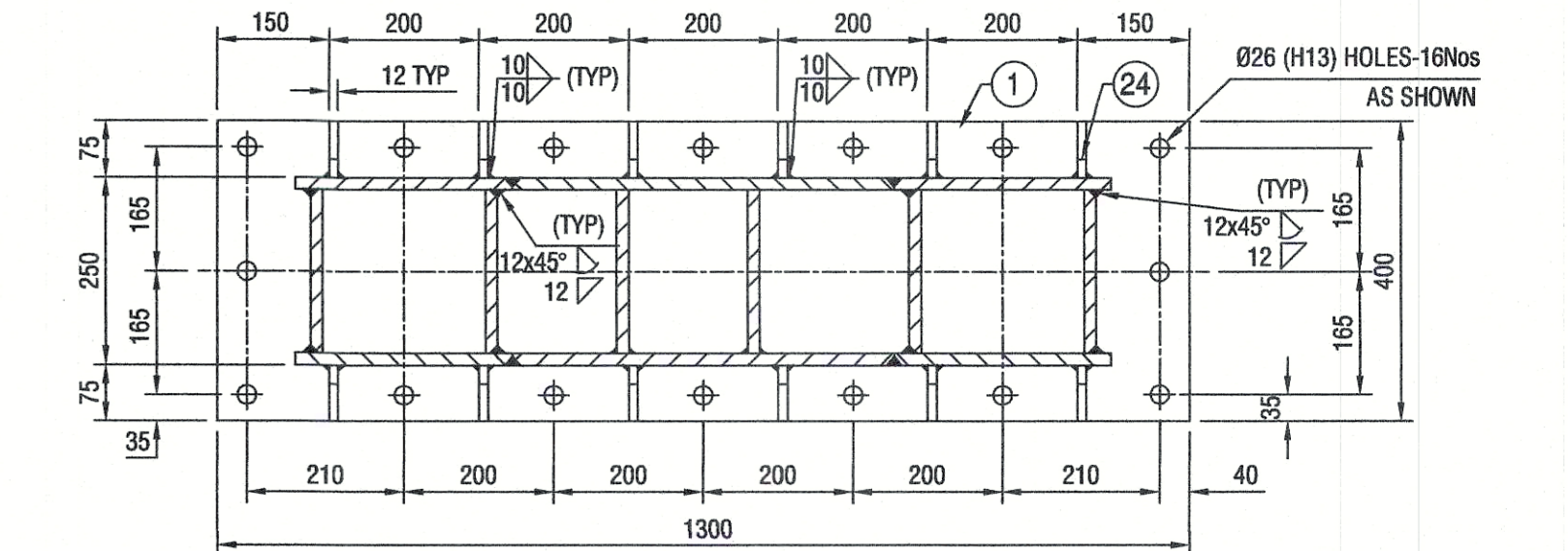
PLAN



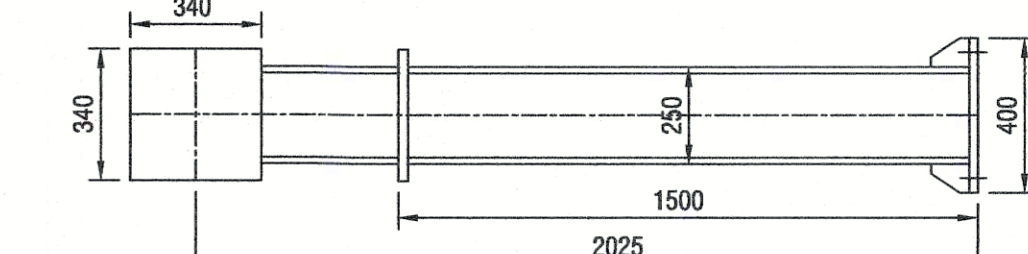
ELEVATION



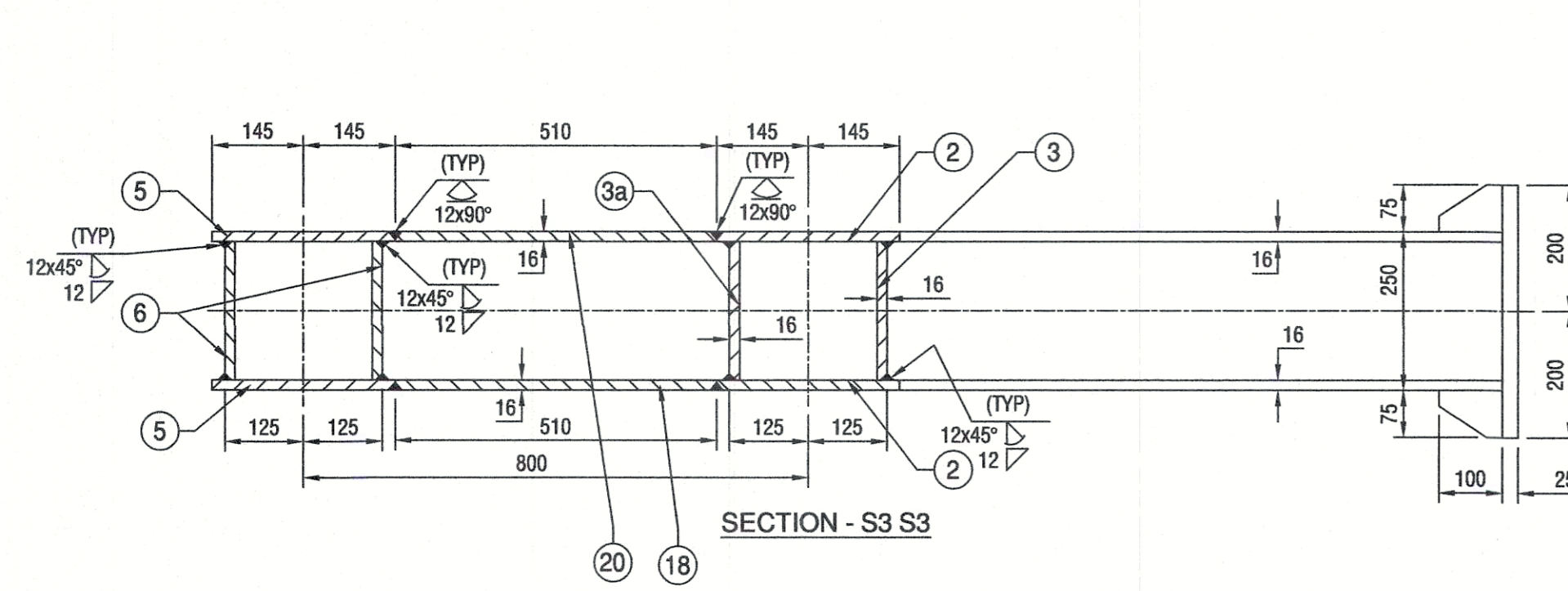
SECTION - S1 S1



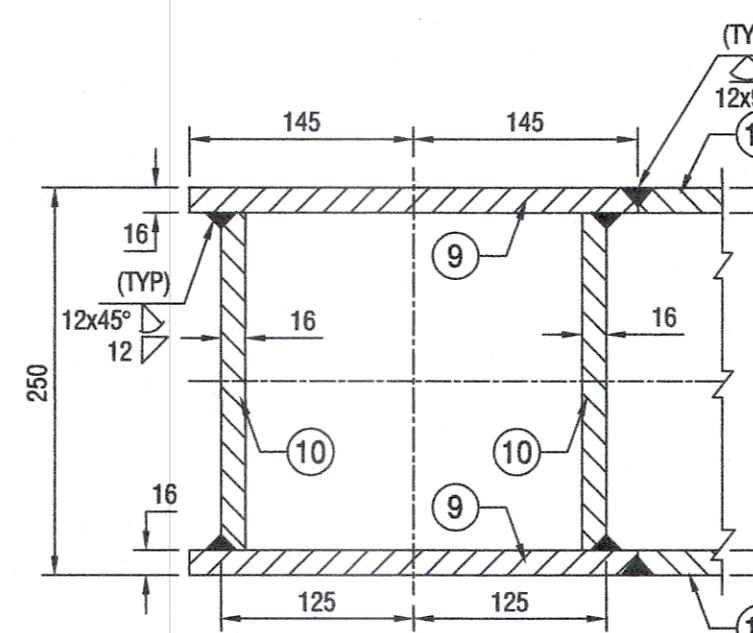
SECTION - S2 S2



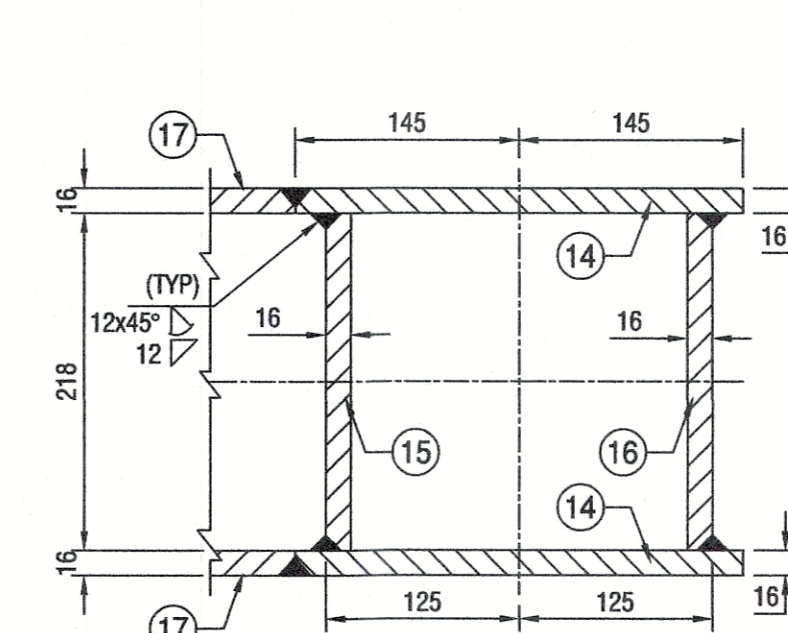
SIDE VIEW



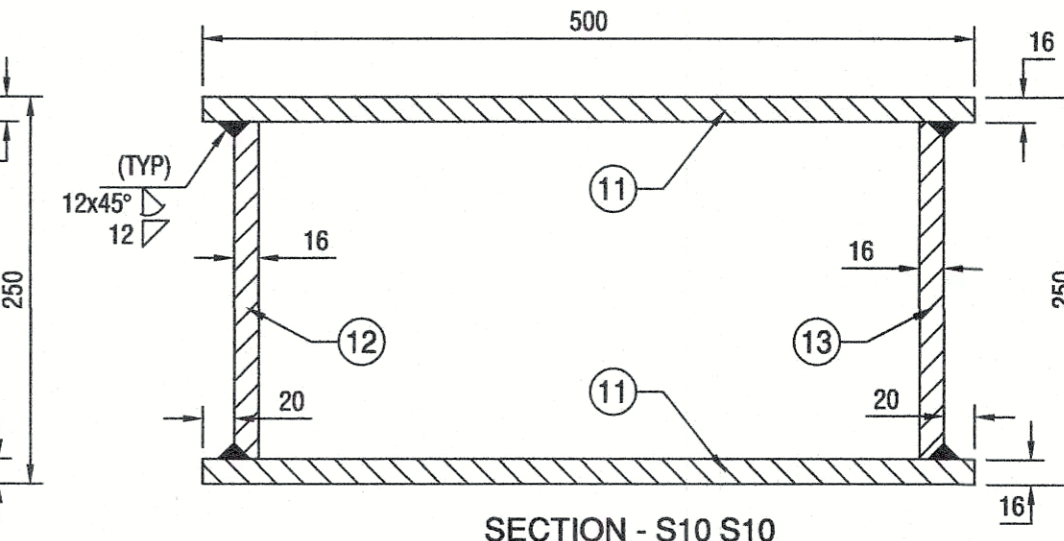
SECTION - S3 S3



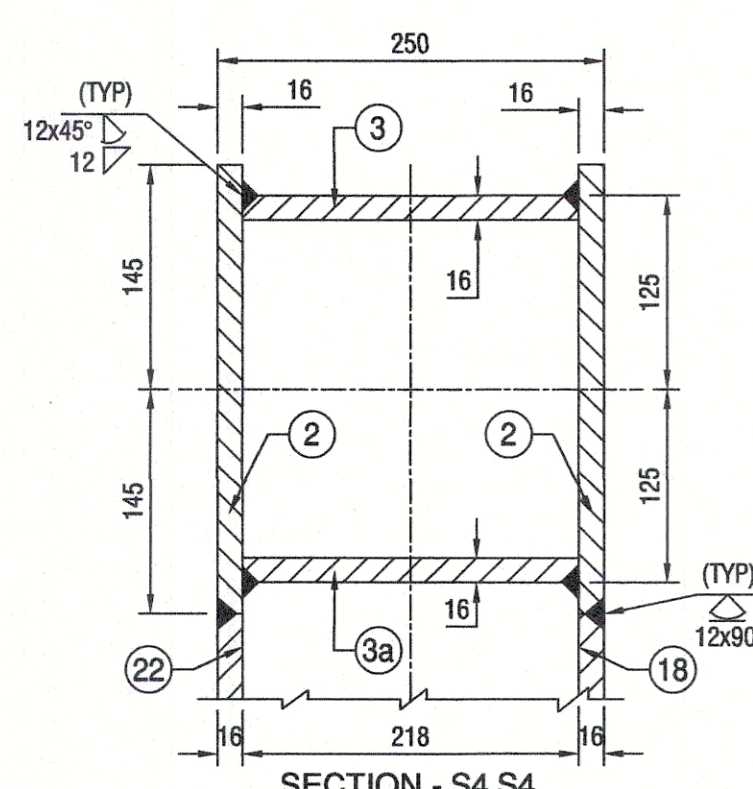
SECTION - S8 S8



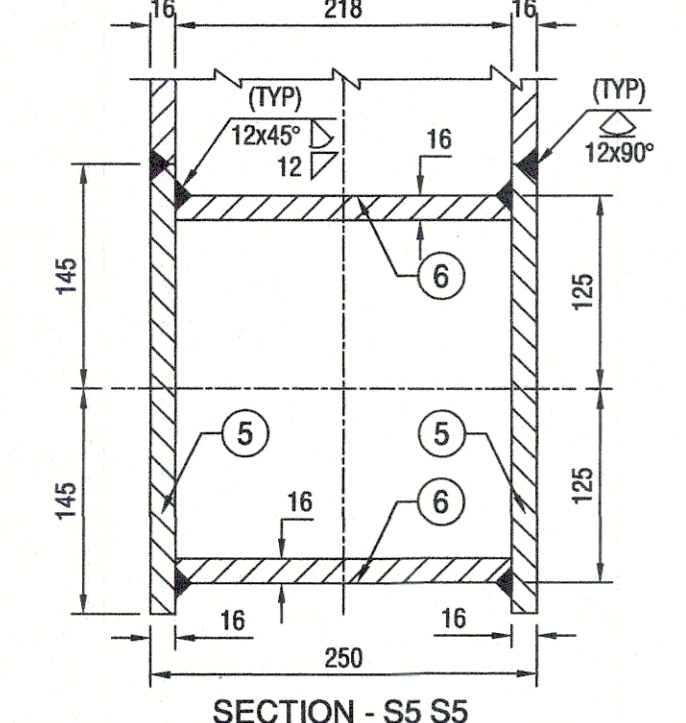
SECTION - S9 S9



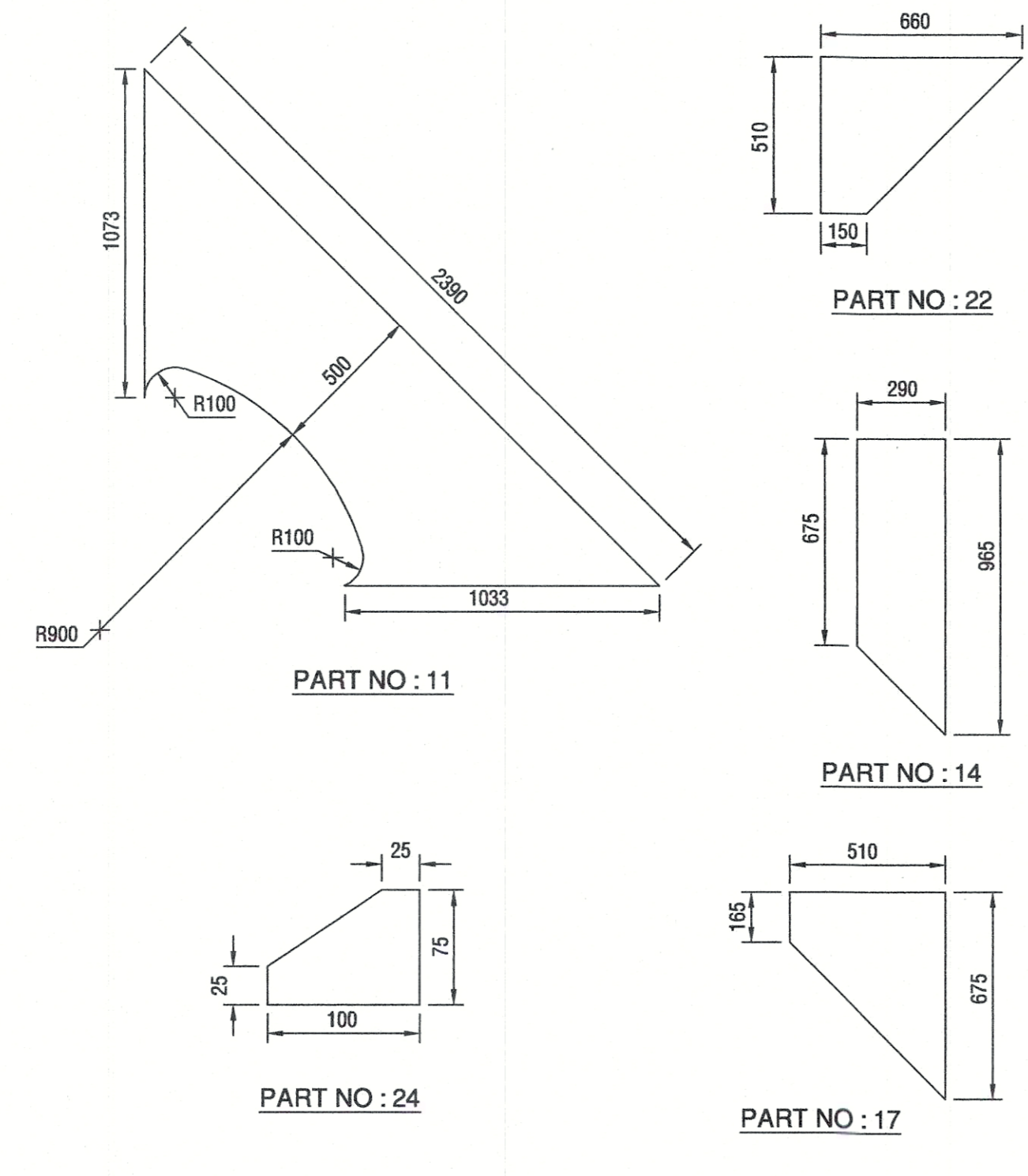
SECTION - S10 S10



SECTION - S4 S4

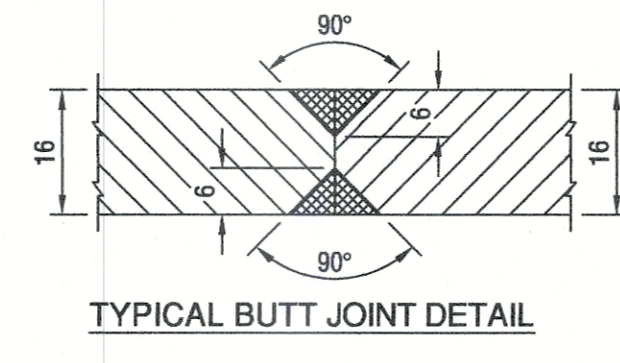


SECTION - S5 S5



NOTES

1. ALL DIMENSIONS SHOWN ARE FINAL MACHINED DIMENSIONS
2. ALL THE WELDS ARE OF 12 mm SIZE FILLET UNLESS OTHERWISE SPECIFIED
3. ALL WELDS ARE TO BE DP TESTED FOR ROOT AND FINAL PASSES TO ENSURE WELD QUALITY
4. ALL WELDING SHALL BE CARRIED OUT AS PER IS : 8005
5. ALL PLATES ABOVE 16mm THICKNESS SHALL BE QUALIFIED BY U. T
6. APPROVED PAINTING SHALL BE FOLLOWED AS PER PURCHASE ORDER
7. ALL MATING SURFACES, BORES & THREADED HOLES SHALL BE GREASED
8. STRESS RELIEVING IS TO BE CARRIED OUT AFTER COMPLETION OF ALL WELDING & BEFORE MACHINING
9. CHECK THE STATUS OF THE DRAWING BEFORE FABRICATION / MACHINING
10. DETAILS REFER DRAWING NO 10-MECH-12-8-22/A1/R1 SHEET 2 OF 2



TYPICAL BUTT JOINT DETAIL

TOTAL WEIGHT : 5569 Kgs. (Approx)

S.NO	DESCRIPTION	MATERIAL	QTY	W.T	REMARKS
24	PLATE 100 x 75 x 12Thk	IS : 2062 E 250	24	17	
23	PLATE 340 x 340 x 25Thk	IS : 2062 E 250	4	91	
22	PLATE 510 x 660 x 16Thk	IS : 2062 E 250	2	52	
21	PLATE 510 x 500 x 16Thk	IS : 2062 E 250	6	192	
20	PLATE 510 x 290 x 16Thk	IS : 2062 E 250	7	130	
19	PLATE 550 x 218 x 16Thk	IS : 2062 E 250	22	315	
18	PLATE 6350 x 510 x 16Thk	IS : 2062 E 250	1	407	
17	PLATE 675 x 510 x 16Thk	IS : 2062 E 250	4	96	
16	PLATE 970 x 218 x 16Thk	IS : 2062 E 250	2	53	
15	PLATE 740 x 218 x 16Thk	IS : 2062 E 250	2	41	
14	PLATE 965 x 290 x 16Thk	IS : 2062 E 250	4	141	
13	PLATE 2370 x 218 x 16Thk	IS : 2062 E 250	2	130	
12	PLATE 1210 x 218 x 16Thk	IS : 2062 E 250	2	66	
11	PLATE 2390 x 730 x 16Thk	IS : 2062 E 250	4	522	
10	PLATE 1450 x 218 x 16Thk	IS : 2062 E 250	4	160	
9	PLATE 1450 x 290 x 16Thk	IS : 2062 E 250	4	211	
8	INTERNAL PLATE 13500 x 218 x 16Thk	IS : 2062 E 250	1	370	SUITABLY CUT & WELD
7	PLATE 420 x 218 x 16Thk	IS : 2062 E 250	8	92	
6	PLATE 7940 x 218 x 16Thk	IS : 2062 E 250	2	435	
5	PLATE 7940 x 290 x 16Thk	IS : 2062 E 250	2	578	
4	PLATE 218 x 218 x 16Thk	IS : 2062 E 250	66	394	
3a	PLATE 6479 x 218 x 16Thk	IS : 2062 E 250	1	177	
3	PLATE 6947 x 218 x 16Thk	IS : 2062 E 250	1	190	
2	PLATE 6930 x 290 x 16Thk	IS : 2062 E 250	2	505	
1	PLATE 1300 x 400 x 25Thk	IS : 2062 E 250	2	204	

STATUS	SIGN	DATE
DISCUSSION / REVIEW		
TENDER PURPOSE		
FABRICATION		
UNRESTRICTED	RESTRICTED	CONFIDENTIAL

DO NOT SCALE THE DRAWING
ASK IF IN DOUBT
UNLESS OTHERWISE SHOWN
ALL DIMENSIONS ARE IN MILLIMETERS
REMOVE SHARP EDGES & BURRS
CHAMFER 1 M.M. X 45°
MACHINING FINISH IN MICRONS :-
▽ 8 - 25 ▽ 1.6 - 8
▽▽ 0.025 - 1.6 ▽▽▽ < 0.025

DEVIATION FOR NON TOLERANCED DIMENSIONS (IS -2102)	
DIAMETERS & LENGTHS	LENGTH IN M.M. OF SHORTER SIDE OF ANGLE
UPTO & INCL 6 ±0.1	UPTO & INCL
6 - 30 ±0.2	6 - 30 ±0.2
30 - 120 ±0.3	120 - 315 ±0.5
120 - 315 ±0.5	315 - 1000 ±0.8
315 - 1000 ±0.8	1000 - 2000 ±1.2
1000 - 2000 ±1.2	2000 - 4000 ±2.0
2000 - 4000 ±2.0	4000 & ABOVE ±3.0
4000 & ABOVE ±3.0	

SCEND
SHAR CENTRAL DESIGNS
DESIGNED: [Signature]
DRAWN: V. V. R. 01.12.23
DRG.CHKD: [Signature]
APPROVED: [Signature]
SIGN. DATE

TITLE		PROJECT	
INTERCONNECTING STRUCTURE - LH		FOR WHEEL BOGIE SYSTEM OF SLC PROJECT	
GOVERNMENT OF INDIA		INDIAN SPACE RESEARCH ORGANISATION	
SATISH DHAWAN SPACE CENTRE SHAR		SRIHARIKOTA	
SCALE	1 : 20	DRG. NO.	10-MECH-12-8-21/A1/R1
SHEET	1	OF	2