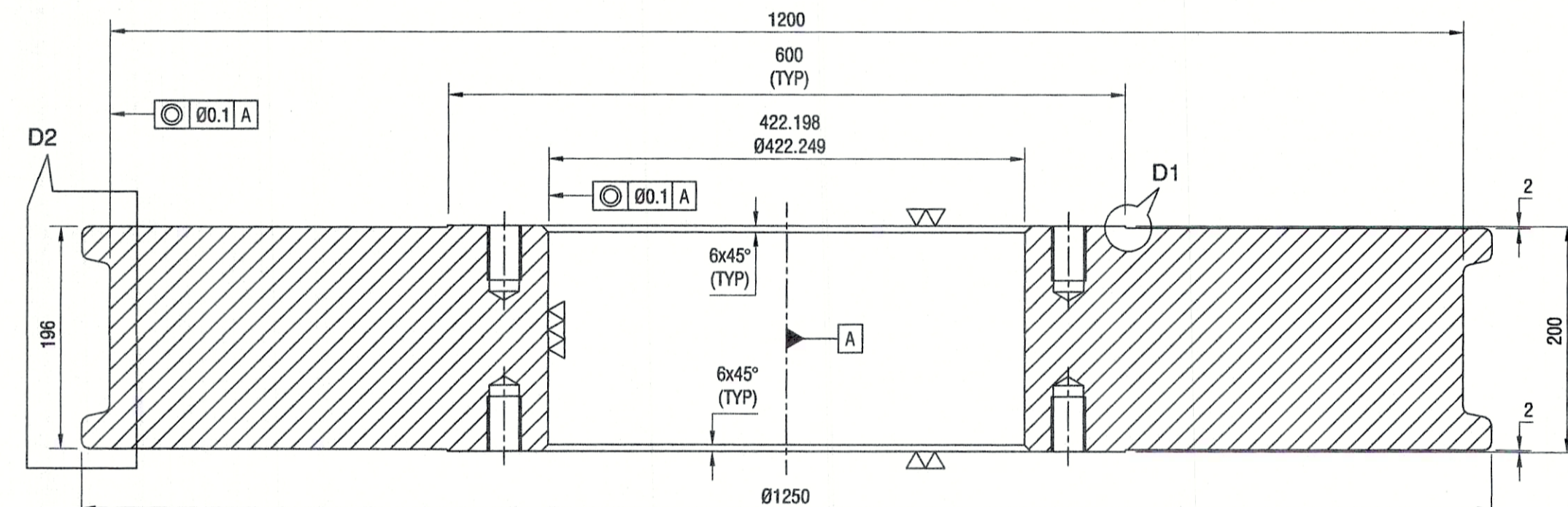


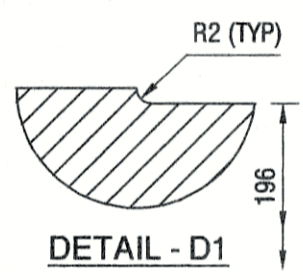
DETAIL - D2

- NOTES**
1. ALL DIMENSIONS SHOWN ARE FINAL MACHINED DIMENSIONS
 2. THE WHEEL WILL BE SUPPLIED BY THE PURCHASER TO THE CONTRACTOR
 3. ALL DIMENSIONS STATED IN THIS DRAWING ARE FOR REFERENCE PURPOSE. THE CONTRACTOR SHALL MEASURE THE DIMENSIONS OF THE WHEEL AS REQUIRED

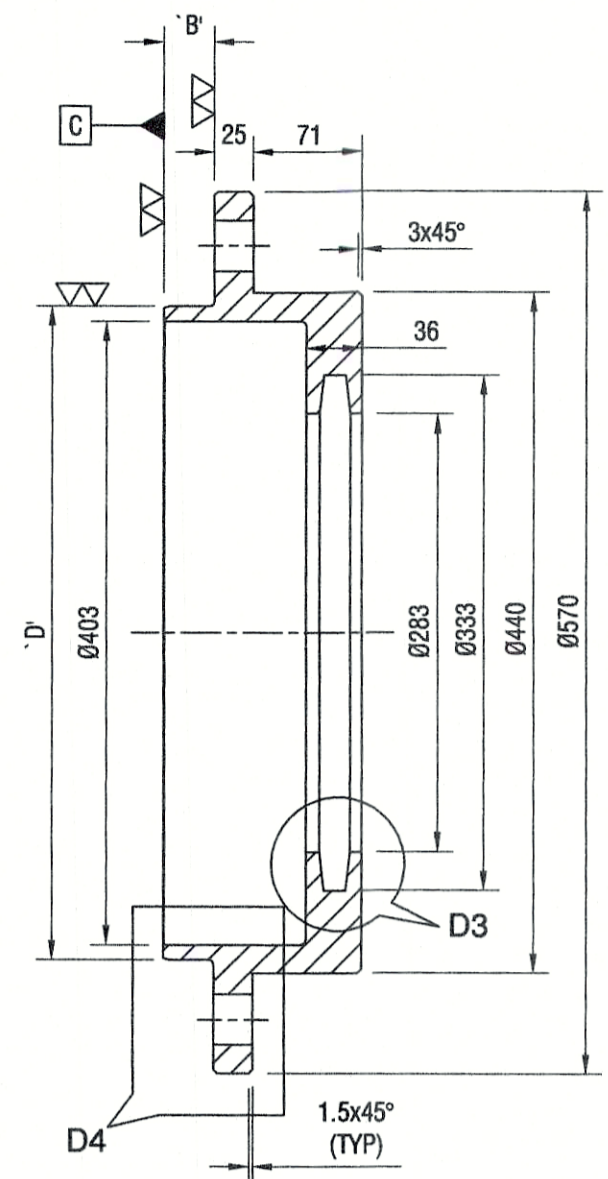
WHEEL
 MATERIAL : 42CrMo4 WEIGHT : 1580 Kg QUANTITY : 8



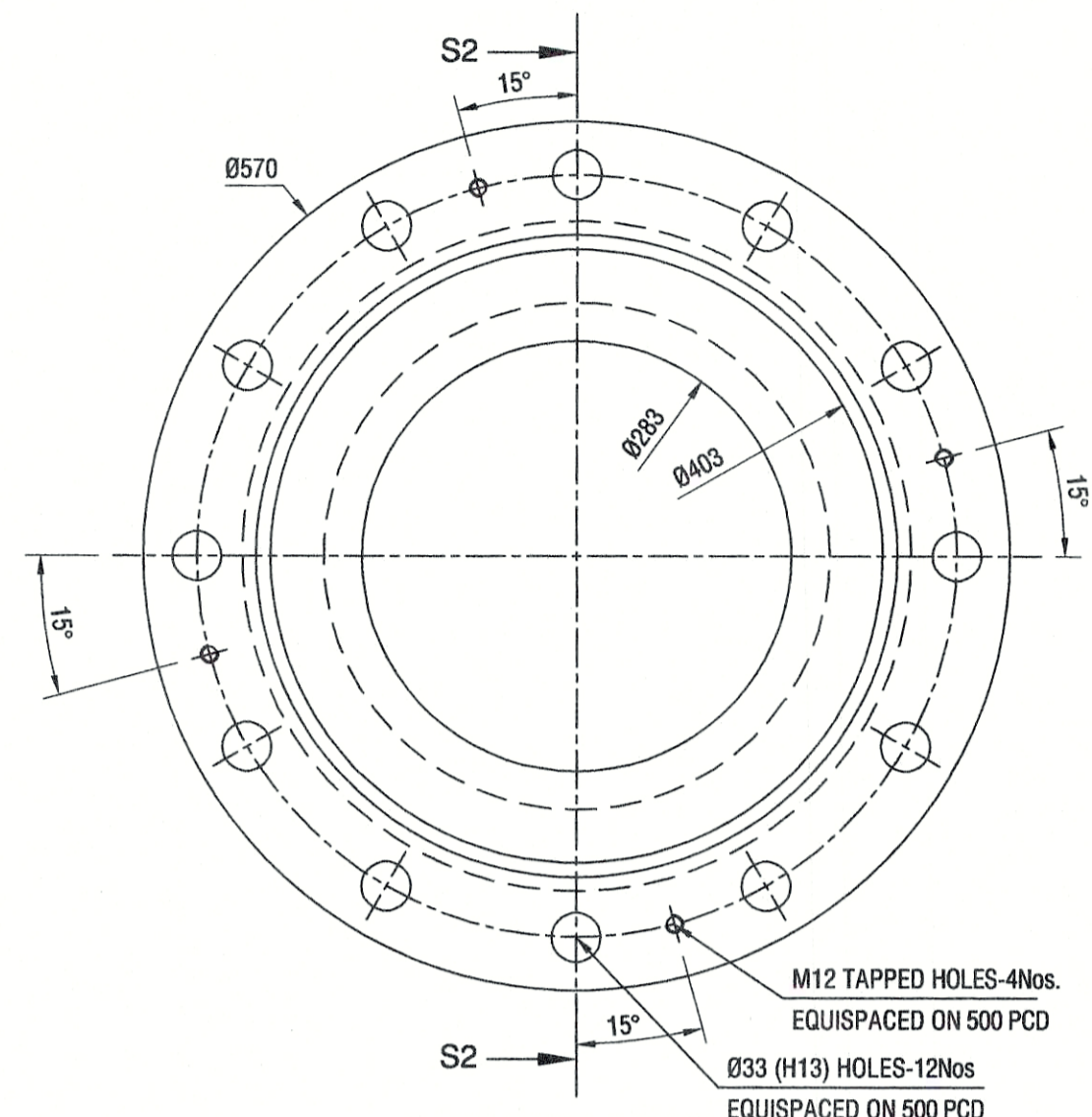
SECTION - S1 S1



DETAIL - D1



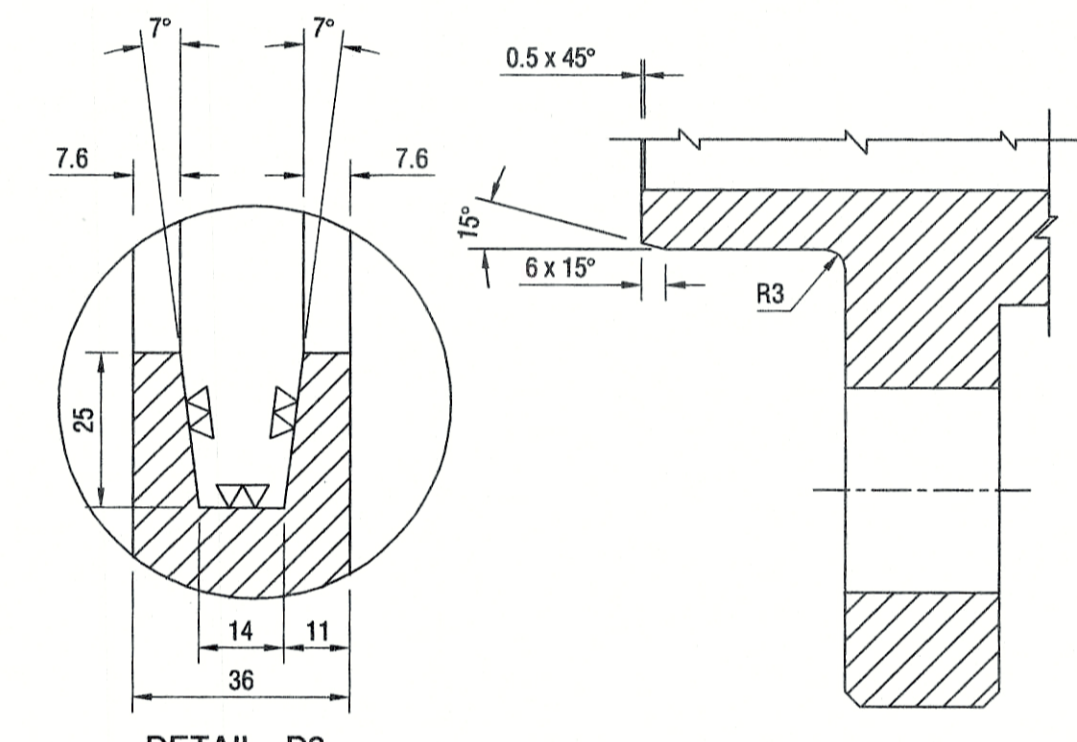
SECTION - S2 S2



BEARING COVER

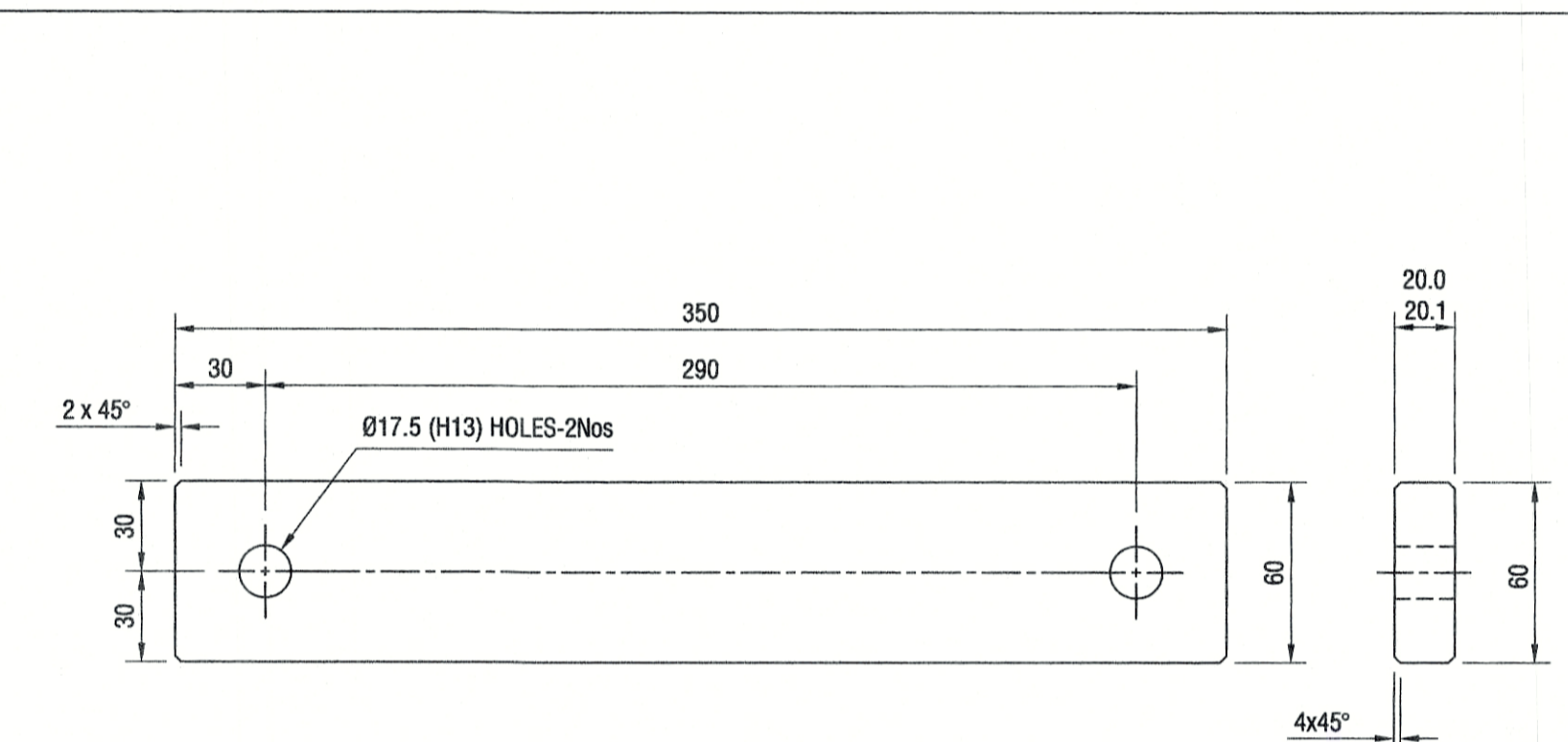
MATERIAL : IS : 2062 E350 WEIGHT : 92 Kg QUANTITY : 16

- NOTES**
1. ALL DIMENSIONS SPECIFIED IN THIS DRAWING ARE FINAL DIMENSIONS WHICH ARE TO BE ACHIEVED SUBSEQUENT TO FINISH MACHINING.
 2. ALL MATING SURFACES, BORES & THREADED HOLES SHALL BE GREASED. THE REMAINING EXPOSED SURFACES SHALL BE PAINTED AS PER SITE CONDITION.
 3. THE DIMENSION 'D' SHALL BE FINALISED TO SUIT THE AS BUILT WHEEL SO AS TO ACHIEVE A DIAMETRAL CLEARANCE OF 0.05 TO 0.07 mm BETWEEN THE BEARING RETAINER AND THE BORE OF THE AS BUILT WHEEL.
 4. THE DIMENSION 'B' SHALL BE FINALISED TO SUIT THE AS BUILT WHEEL SUCH THAT THE SURFACE OF THE TWO BEARING RETAINERS (LOCATED INSIDE WHEEL BORE) BUTTS AGAINST THE OUTER RACE OF THE BEARING INSIDE THE WHEEL BORE.



DETAIL - D3

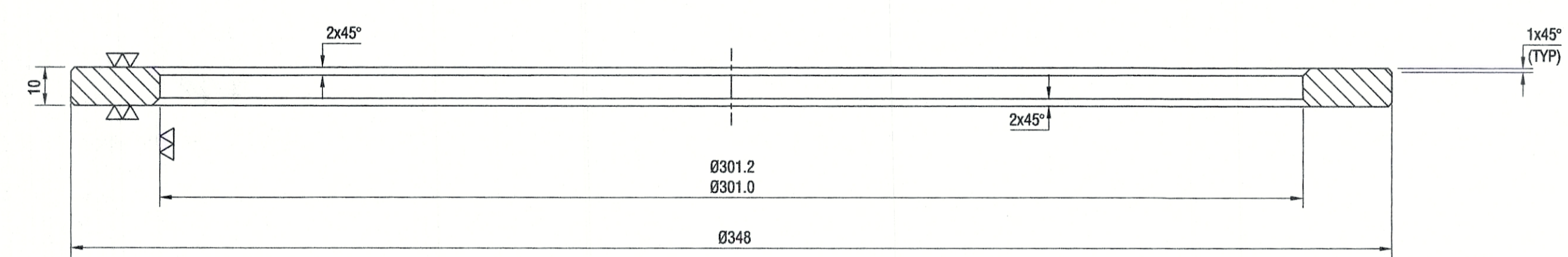
DETAIL - D4



LOCK PLATE FOR WHEEL SHAFT

MATERIAL : IS : 2062 E250 WEIGHT : 4 Kg QUANTITY : 32
 FINISH : ∇∇

- NOTES**
1. ALL DIMENSIONS SPECIFIED IN THIS DRAWING ARE FINAL DIMENSIONS WHICH ARE TO BE ACHIEVED SUBSEQUENT TO FINISH MACHINING.
 2. ALL MATING SURFACES, BORES & THREADED HOLES SHALL BE GREASED. THE REMAINING EXPOSED SURFACES SHALL BE PAINTED AS PER SITE CONDITION.



SPACER FOR WHEEL SHAFT

MATERIAL : IS : 2062 E350 WEIGHT : 2 Kg QUANTITY : 8

- NOTES**
1. ALL DIMENSIONS SPECIFIED IN THIS DRAWING ARE FINAL DIMENSIONS WHICH ARE TO BE ACHIEVED SUBSEQUENT TO FINISH MACHINING.
 2. ALL MATING SURFACES, BORES & THREADED HOLES SHALL BE GREASED. THE REMAINING EXPOSED SURFACES SHALL BE PAINTED AS PER SITE CONDITION.

STATUS	SIGN	DATE	DEVIATION FOR NON TOLERANCED DIMENSIONS (IS -2102)	SCEND	S.NO	DESCRIPTION	MATERIAL	QTY	W.T	REMARKS			
DISCUSSION / REVIEW			DIAMETERS & LENGTHS UPTO & INCL 6 ±0.1 6 - 30 ±0.2 30 - 120 ±0.3 120 - 315 ±0.5 315 - 1000 ±0.8 1000 - 2000 ±1.2 2000 - 4000 ±2.0 4000 & ABOVE ±3.0	LENGTH IN M.M. OF SHORTER SIDE OF ANGLE UPTO & INCL 1- 6 ± 1'-00 6- 30 ± 0'-30 30-120 ± 0'-20 120-400 ± 0'-10	SHAR CENTRAL DESIGNS DESIGNED: K.P.G. / V.V.R. DRAWN: V.V.R. / 17.01.24 DRG.CKCD: K.P.G. / V.V.R. APPROVED: K.P.G. / V.V.R.						TITLE: WHEEL, BEARING COVER, SPACER & SHAFT LOCKING PLATE FOR WHEEL BOGIE SYSTEM OF SLC PROJECT GOVERNMENT OF INDIA INDIAN SPACE RESEARCH ORGANISATION SATISH DHAWAN SPACE CENTRE - SHAR SRIHARIKOTA		PROJECTION
TENDER PURPOSE													
FABRICATION													
UNRESTRICTED	RESTRICTED	CONFIDENTIAL											