

Supply and Installation of Biometric Attendance System

1. Description

The tender is being proposed for Supply, Installation, Integration, Commissioning & Maintenance of Finger Print Based Biometric Access Control System (BACS) and Attendance system at Laboratory for Electro Optics Systems (LEOS), Aryabhata and Optics Fabrication building located at Peenya Industrial Area, 1st Stage, 1st Cross, Bengaluru – 560058.

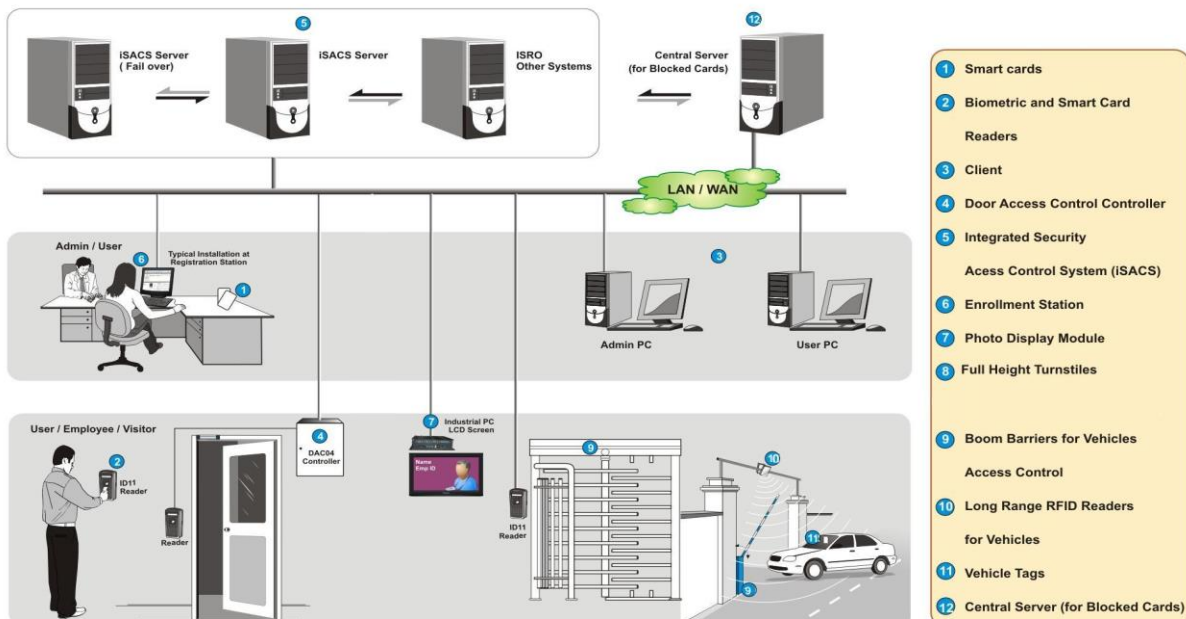
Biometric based attendance system is operational at LEOS. Present system consists of smart card readers (fixed), Turnstile Gate, EM locks for laboratory/building, software, reports, management/monitoring software.

This tender is to replace/augment the existing system with new swing gate barrier with finger print and smart card-based attendance & BACS at main gate and second level entry at LEOS and Aryabhata & Optics Fabrication building with interoperability across all ISRO Centres/Units.

2. Brief Scope of Work

1. The proposed biometric system, after successful commissioning, shall provide controlled entry at main entry points and second level entry points like lab, restricted areas, etc for personnel like employees, non-employees, visitors, other centre employees through validation that would include DOS/ISRO provided employee card, finger print stored in smart card using two factor authentications, use of Finger Print only, Card + PIN mode of validation etc. The system will also include photo display of personnel at main entry point.

2. The scope involves installation and integration of security components to include Access Control, Restricting and Monitoring movement of personnel and attendance of employees & non-employees. The scope of work for this contract shall include procurement, installation, integration, testing, commissioning, maintenance and associated services for a fully operational finger print & smart card-based attendance system & BACS, that provide central security management, integrated control and remote monitoring of the intended site, regular tracking of employee's attendance.



Existing Block Diagram of Biometric based Attendance System

3. Vendor shall remove all the components of existing access control equipment at Main gate entrances & second level of both LEOS, Aryabhata and Optics Fabrication building. Install & integrate all the items as per the new indent.
4. The appropriate “system” shall allow for the integration of the aforementioned components, such that the management of all sub-systems resides within a single data-base application. The “system” shall have the ability for managing every subsystem at different locations by an appropriate ‘Administrator’ from a control room.
5. The entire BACS and subsystems including all its hardware, peripherals, software and software licenses as specified within this document shall be supplied and provided as part of this contract. The documents include user manual, software requirements specifications document and software design document, server documents, datasheets of all the hardware components, software procedure manual as per our customized requirements, flowchart of operating procedure of the application.
6. All necessary tools, Equipments, hardware and software are required as described in this document for the complete installation of the biometric system, vendor shall be supplied, installed, configured, programmed, tested, commissioned and trained. The tenderer shall supply all materials and services necessary for installation and commissioning of the systems.

Specification of Biometric Access System

1. Mifare 4K card		
Sl. No	Item Description	Item Specification
1	Mifare smart card compliance	Mifare smart card compliant with ISO 14443A
2	Read range	minimum 5 Centimeters
3	Memory and data retention	4 KB or better for 10 years
4	card type	Water proof white PVC glossy type
5	Chip Serial Number (CSN)	Card shall have unique Chip Serial Number (CSN)
6	Frequency	13.56MHz high frequency

2. Fingerprint terminal with in-built Mifare Card reader		
Sl. No	Item Description	Item Specification
1.	Reader features	Card, Fingerprint, Card+Finger, Card or Finger, Card+PIN, PIN+Finger
2.	Display	4.3" touch display along with keypad
3.	Configurable display	User configurable display on LCD upon an event
4.	identification modes	Identification (1:N) & Authentication modes (1:1)
5.	Simultaneous Identification	Simultaneous Identification or Verification or scheduled mode should be flexible
6.	1:N (Identification)	1:N (Identification) for 500, 3000 or 5000 Users
7.	Processing time	<2 seconds processing time.
8.	Biometric bypass for select users.	Biometric bypass for select users to be enabled
9.	Card Options	Scosta, Desfire, Mifare, Prox, iCLASS, SEOS
10.	Template storage	Template storage on Terminal or Smart Card
11.	Web browser User Interface	Built in Web browser User Interface.
12.	Communication mode	Weigand, Serial, Ethernet
13.	Power Over Ethernet Option.	Power Over Ethernet Option to be made available
14.	Optical Sensor	500 dpi Optical Sensor 14x20mm polycarbonate enclosure with compact dimensions
15.	Industrial usage	for rugged Industrial usage / IP54
16.	Managing templates	Manages up to 500 / 3000 / 5000 users, two templates each, in identification mode
17.	Individual ID selection	Operating mode shall be selectable by individual ID
18.	Fingerprint templates upload	Fingerprint templates upload / download via laptop & browser

19.	Access & Attendance System Software	Compatible with Access & Attendance System Software Suitable for stand alone or networked operation Multi-color LEDs / Buzzer available Serial and Ethernet (100 /1000 Base T) Biometric reader is configurable to provide secure, bidirectional communication in compliance with OSDP (Open Supervised Device Protocol) protocol
20.	Supply Voltage	9V,16V(250mA@12V)
21.	CPU	ARM9 Family CPU Dual Core @ 1GHZ, 32bit
22.	Memory	1 Gb Flash,1Gb RAM
23.	FAR & FRR	Adjustable according to security requirements
24.	Lock Control	Relay Contact(One)used
25.	Communication options	Customizable Wiegand Output or OSDP. Support all bit formats
26.	Dimensions (H X W X D)	170mm X 170mm X 49mm
27.	Weight	700gm
28.	Housing Material	Polycarbonate
29.	Operating Temperature	0°C to +50°C
30.	Storage Temperature	-10°C to +65°C
31.	Operating Humidity	0% to 95%
32.	Ingress Protection	IP54
33.	Certifications	FCC , CE, RoHS

3. Handheld reader		
Sl. No	Item Description	Item Specification
1	Physical Size	195 x100 x 45 mm
2	Weight	With battery - 470Gms, with charger included - 680Gms
3	Housing	Flame retardant polycarbonate containing fully encapsulated electronics
4	Memory	1GB RAM, 4GB Flash expandable up to 16 GB
5	Microprocessor	ARM Dual Core
6	Operating System	Android 4.2 or better
7	Card Reading option	Mifare, 1K & 4K
8	Biometric Support	Sagem 500, 3000, & 5000 users
9	Charging Voltage	12V DC
10	Battery	3.7V 6Amp & 11.1V _ 1150m Amp Li-Ion smart
11	Battery Charge Time	Less than 4-6 hours
12	Operational Temperature	0 To 50 degrees
13	Operational Humidity	5% - 95% (non-condensing)
14	Data Communication Options	Wireless LAN
15	Keypad	Function keys available (F1- F4)
16	Ingress rating	IP 54 or better

4. Finger Enrollment reader with Enrollment & Terminal Management Software with Smart Card Writer		
Sl. No	Item Description	Item Specification
1	Biometric type	Finger print
2	Sensor Type	Optical (Minimum 500 dpi)
3	Enrollment size	Maximum 512 bytes for native format and 512 Bytes for ISO 19794 format for each finger template.
4	Operation mode	Shall support (Finger + Smart card), (Finger + Smart card + PIN), (Finger + PIN), (Smart Card + PIN), Finger only, Smart Card only for single / multiple user/s.
5	Storage capacity	Minimum 10,000 finger print template storage capacity
6	Transaction capacity	Minimum 50,000 events
7	Verification time	Less than one second for 1:1 biometric verification
8	Smart card reading capability	Mifare 13.56 MHz with sector reading (32 bit format in accordance with ISO 14443 series with dual key authentication (Both Key A and B of Mifare architecture)
9	Sensor sensing conditions	Should be capable for reading finger in dry, wet, mehendi and oily conditions
10	Smart card read range	5 cm minimum and to accommodate +/- 30 deg elevation error during presentation by the user
11	Interfaces	Ethernet, Weigand better than 37 bit format
12	LCD display with backlight	To show day, date & time by default. To display the details of valid / invalid entry with Name and Employee's ID at the time (24 Hrs. Format) of card flashing.16 Character or better display is preferable.
13	LED indication	To show power on, valid entry, invalid entry or any error
14	Audible alarm	For valid entry, invalid entry and any error. Alarm shall be audible in outdoor conditions
15	Real Time Clock (RTC)	RTC with battery backup. Reader RTC time shall be synchronized through NTP time server. Provision should be available to set the NTP server parameters. Time sync. Interval shall be customizable.
16	Data & time retention	In case of power failure, the data retention to be provided using flash memory and the Real Time Clock of the unit should be retained with current date and time

17	Protection of transaction data	In case memory is full; the reader shall disable further transactions to protect overwriting of transactions data. Message shall be displayed on reader and admin alert shall be sent to administrator
18	Event/ Alarm logger	Event logging in the onboard memory for the alarm observed at each location along with time shall be archived and retrieved
19	Safety certification	The device shall be UL/CE certified (Bidder to attach documentary evidence).
20	Operating conditions	Shall be weather proof (Polycarbonate enclosure) and capable for operation in outdoor condition under canopy without interference from day light illumination considering all the seasons. (preferably IP rated)
21	Power save	Provision to go to power save mode if not in operation for more than 30 seconds
22	Environmental	Shall operate at 0o to 50oC and RH of 10% to 90%
23	Battery backup	Rechargeable battery to withstand 12 Hours of operations with indication for available battery capacity. Battery charger shall be like that of cordless telephone charging type and not of mobile phone type.
24	Battery charger	Compatible battery charger for Single Phase 230V, AC, 50Hz
25	Case for carrying and protection	Leather pouch with sling
26	Weight	Less than 500 grams with battery

5. Smart card personalization kit		
Sl. No	Item Description	Item Specification
1.	kit consists of	<ul style="list-style-type: none"> • Card • Personalization Software with USB • Smart Card writer/Reader
2.	Smart card reader / writer	The Smart Card Reader / Writer is a dual interface PC linked reader that will read / write to both a 13.56 MHz RFID contact less smart card.
3.	Host Interface	USB 2.0 CCID1
4.	Transmission speed	12 Mbps
5.	Power supply	Bus powered
6.	Support	PC/SE Driver and CT-API Driver Support Windows XP / 2000 / 2003 / Vista with upgrade ability with future versions

6. Framework for user and device management with 10 web user login		
Sl. No	Item Description	Item Specification
1.	Web based solution consists of	Smart web based application developed for maintaining Access information of the Employees which consists of tracking employee movements, Access rights and basic attendance information
2.	Hierarchy management	Hierarchy management for the user
3.	Real time dashboard	1. Should have configurable dashboard. 2. Information at glance - presenting wide no. of different metrics in a single consolidated view. 3. Visual assessment of performance via strong database visualization.
4.	Define roles to employees	Define roles to employees to associate an Employee-Manager relationship
5.	Auto error	Auto error reporting facility to be provided
6.	View History	View history for 1 year
7.	License	License management to be taken care
8.	Display settings	Option to change the display settings
9.	database backup	Alert notification for database backup
10.	Full audit trial of system activities	Required.

7. Access control add on, Access groups, Time zones, door security management		
Sl. No	Item Description	Item Specification
1.	Access group management	1. Bulk association / dissociation of Access groups of Employees. 2. access group approvals. 3. Facility to invoke and revoke access rights. 4. Delegation of Access approval and access request authority
2.	Enhanced Access card Management	1. Facilities to assign, cancel, block and unblock cards. 2. Facility to hotlist cards so that they are not used permanently. 3. Change card pin
3.	Time zone based access	Required.
4.	Comprehensive reporting facilities which includes	1. Reporting of Employee access, active employees, location wise, Access group wise, Door wise

		<p>employees report, Blocked card reports, Audit log reports, hot listed card report, etc.,.</p> <p>2. Multi select filter framework helps to isolate the data users want to analyze.</p> <p>3. Export reports.</p> <p>4. Email reports.</p>
5.	Dynamic reporting facility	<p>1. Facility to design, save and generate customized reports using simplistic drag, drop interface and non-technical terminology.</p> <p>2. Generate reports to multiple output formats including PDF, CSV, Text and excel</p> <p>3. Adding reports to dashboard for quick access of information and rapid decision making and view report result as a chart including bar, line, pie, point and grids</p> <p>4. Scheduling and emailing reports users can receive specific reports at regular intervals by scheduling them.</p> <p>5. Sharing the reports with team members and users.</p> <p>6. Folder arrangement and tree view</p> <p>7. Print reports</p>
6.	Quick access	Quick access to information using quick links to pages

8. Time attendance add on, shifts, leaves, self-service, overtime management		
Sl. No	Item Description	Item Specification
1.	Accurate Tracking	The software should track absent, late, early leave, OT and worked hours
2.	Shift management	Should be able to manage the different types of shifts and help the organization to plan and schedule employee shifts without any complication
3.	Application rights	Role based access to information in the application like Admin, Manager, Employee
4.	Holiday and weekly off management	Should able to manage the different types of holidays like PH, RH and also weekly off like rotational or fixed off as per the organization policy.
5.	Manual punch	Allow the employees to update attendance in software after punching which requires the approval from manager.
6.	OT and CO Management	Should help the organization to define and configure overtime and compensatory off
7.	Demography	Visual assessment of performance via strong data visualizations
8.	Notifications	Email notifications for leave requests, approvals and rejection.

9. Visitor management add on, visitor enrollment, authentication, blacklisting management		
Sl. No	Item Description	Item Specification
1.	Visitor Pre-Registration	Register Visitors/ group of Visitors using online registration before they arrive or register as they arrive. Allow Employees to pre-register Visitor through online web interface.
2.	Visitor Information Capture	Capture relevant Visitor details along with photograph, Signature, biometric and material information
3.	Visitor Authentication	Add Visitors to access Control system by assigning access rights to Visitor and issue access cards to open Doors/swing gate barrier which gets deactivated as Visit time expires.
4.	Visitor Authorization	Authorize Visitor prior to printing the badges/ issuing cards and entering the premises. The system shall allow for authorization at the reception/ Security or by authorized person remotely. Notifications sent to Visitors regarding approval / rejection.
5.	Approval Notifications	Email/SMS notifications sent to Location Approvers / Circle Approvers
6.	Host Notifications	Email notifications sent to host Employee upon Visitor's arrival.
7.	Visitor Assest Control	Material notification will be sent to concerned personnel for approval/ rejection prior to badge issuing/ signing in the Visitor.
8.	Visitor Blacklisting	Blacklist Visitors thus keeping unwanted Visitors away from the premises.
9.	Repeat Visitor Quick Check IN	For repeat visit, retrieve the Visitor information and create Agenda quickly.
10.	Full Audit Trial of Visitor Activities	All Visitor activities are logged and are recorded for audit purpose; these records can be viewed by generating the audit log report.
11.	Employee self service	An employee of the organization can appoint a Visitation which is sent for approvals
12.	Visitor Dashboard	Dashboard must show Live information of who is in the premises, timed out visitors and more. It also include the data in graphical format
13.	Custom fields	Visitor management should be to our specific needs by creating custom fields with required type.
14.	Comprehensive Reporting	Retrieve Visitor data with multi select filter framework that helps to isolate the data, users want to analyze. Export Visitor data to different file formats like PDF, CSV, Text, and excel, email reports to recipients and also send for printing.
15.	Visitor configuration	Enable / disable information like : 1. Rights to create agenda for Approver / HR / Administrator / Employee 2. Visitor time format

		<ul style="list-style-type: none"> 3. Enable / disable black listed visitor settings, building and floor settings and extend visit time settings 4. Email settings and notifications 5. Visitor sign in and sign out settings 6. Custom field creation for visitors. 7. Default visitor type settings
--	--	--

10. Attendance Admin configurator		
Sl. No	Item Description	Item Specification
1.	Attendance tracking	Keeps track of attendance of the employees based on various events, such as shifts, late coming, early going, over time, permissions, holiday, weekly off's and on duty
2.	Attendance rules	Configures attendance to exactly fit your company requirements with a variety of rules for presence, absence, worked hours, overtime, compensatory off, late coming, early going, leave credits and leave debits and so on.
3.	Manual Entry of Attendance	In the event of the failure of the Employee to punch/swipe manually mark attendance. Manual punch approvals with privileges to cancel a pending request, reject approved requests and re-apply rejected requests.
4.	Attendance Authorization	<ul style="list-style-type: none"> 1. Post and Pre-Authorization of Attendance, such as Late coming and early going. 2. Late coming and early going approvals with privileges to cancel the pending request, reject approved requests and reapply rejected requests. 3. Approvals for Leaves debits, credits, encashment, manual punch, shift swap, late coming and early going
5.	Shift Management	Defines and manages flexible Shifts, rotational shifts, Calendar Shifts, Shift scheduling; also allow Employees to schedule their shifts using Shift swap and approve or deny it from any place and anytime
6.	Leave Management	<ul style="list-style-type: none"> 1. Defines the Leaves; configures the leave policy & rules for Leave types 2. Leave usage monitoring and balance enforcement 3. Leave credits requests and approvals 4. Leave approvals and notifications 5. Leave cancellation after submission, approval, reapply rejected leaves, and revoke cancelled leave 6. Advance Leave Credit requests and approvals
7.	Holiday & Weekly off Management	Defines the Holidays & Weekly Off's as per the Organization requirements and assign to Employees
8.	Overtime Management	<ul style="list-style-type: none"> 1. Calculates the extra worked hours of Employees based on the various business rules for OT Eligibility. Through an authorization screen accept/reject/change overtime worked hours. 2. Accumulate overtime worked hours of multiple days to create a compensatory off leave.

		3. Compensatory Off/OT credit requests and approvals. 4. Leave encashment requests and approvals.
9.	Payroll Management	1. Payroll configurations. 2. Automatic and manual Payroll Lock for every month. 3. Payroll Reporting.
10.	Extensive Reporting	Extensive reports for analysis and decision making. Real-time customizable reports can be critical to the operation of any company, so when it comes to making important HR decisions, never is in the dark again. 1. Multi-level filtering of report results, such as sorting, searching, group by column and conditional filtering. 2. Export reports to different file formats like PDF, CSV, excel and text. 3. Email reports to authorized personnel. 4. Hide/unhide report columns. 5. Print reports.
11.	Rich Informative Dashboard	1. Summarizes the collections of relevant data on a single computer screen. 2 Easy monitor performance and is based on the latest information. 3. View dashboard data tied to a specified User. Display dashboard data dependent on the logged-in user. 4. Statistics of Attendance data based on various parameters. 5. Visual assessment of performance via strong data visualizations. 6. View Employee Attendance related parameters, such as presence, absence plotted in the calendar with colour indications. 7 Create Dynamic sections.
12.	Importing Attendance Details	1. Bulk import Attendance data into the database, such as 2. Manual shift import. 3. Leave credit import
13.	Simple Querying via Drag & Drop interface	With simplistic drag and drop interface, filtering, sorting, adding, removing columns and conditional formatting reports can be generated
14.	Automate your reports	Automatically generate reports you need, as you need – Daily, Weekly, monthly, once in ‘N’ Days, Weeks, Months and deliver to your inbox in required formats like pdf, CSV, excel and text file
15.	Share the Reports	Report sharing for better decision making.
16.	Quick Access to Required Reports	Addition of reports as menu items for quick access.
17.	Folder Arrangements and Tree View Display	Group related reports can be grouped and placed under a folder. These folders will be displayed in a tree view format for easy searching and viewing.
18.	Multilevel Filtering	1. Search Fields by filtering fields based on their Data types, such as text, number, date, time and summation.

		2. Filtering the records by including condition, such as count filter and sorting the records.
19.	Dynamic Dashboard	Add the reports to the Dashboards and always see the latest metrics. Use a wide variety of charts to build insightful Dashboard.
20.	Delegation of Approval Rights	In case of absence/on leave of Manager, the manager can assign approval authorities to another authorized person using the Leave and manual punch approval parking feature. The selected person can be of a higher level or the same level.
21.	Multilevel Approvals	Set multilevel approval levels in the application for approval of a request. Multilevel approval is a chain of the approval process of a particular approval request. An approval request will be first sent to the first level approver for some configured number for days, if it is not acknowledged within those number of days it will be moved to the next level for approval and this process will be further continued till the request is acknowledged.
22.	Managing Users	1. User type creation is defined to restrict access to information. Users are limited to access permissions depending upon User type. 2. With Attendance Management application, Employees can view and track their Attendance, regularize their attendance even from remote Location. 3. Managers can effectively manage and track their team attendance, thus minimize loss due to employee downtime. 4. HR can also effectively manage and track their Location / Department Employee's attendance.
23.	Attendance History	Have in-depth attendance history of all Employees.
24.	Notifications and Online Chatting	1. Receive alerts/notifications on leaves approvals, leave status, manual punch approvals, and manual punch status. 2. Birthday and anniversary notifications of the day. 3. Send Birthday and anniversary wishes 4. Automated Birthday and anniversary video and greeting card sent to the celebrant. 5. Send and receive messages. 6. Instant chatting based on the Employees availability using the online chatting facility.
25.	Attendance Configurations	Enable/ disable Attendance parameters like: 1. Attendance data displayed on the Dashboard. 2. Enable/ disable tabs displayed for individual Employee type. 3. Enable/ disable filters to be displayed in the reports. 4. Enable/disable Leave applications to be rejected after approval, cancellation of approved leaves, request cancellation, approve rejected leaves, and reapply rejected leaves. 5. Enable/disable manual punch applications to be rejected after approval, cancellation of approved leaves, and request

		<p>cancellation, approve rejected leaves, reapply rejected leaves.</p> <p>6. Enable/disable request for cancellation of approved leave encashment application, leave credit requests, late coming and early going requests, Compensatory off / OT credit requests and accumulation of OT hours for Compensatory off.</p> <p>7. And other configurations like email configurations, setting multilevel codes for escalation of approvals, approval parking settings, restricted holiday applicable dates, shift swap approval settings and more.</p> <p>8. Payroll configurations</p>
--	--	--

11. Visitor management security / reception client		
Sl. No	Item Description	Item Specification
1.	Scan Visiting cards	For quick agenda creation pull visitor details from visitor cards and all visitor information will be filled automatically.
2.	Badge designer module	Design badges for visitor types, import details from the appointment at the click of the button
3.	Badge printing	Simple connect a badge printer to the system and print visitor badges
4.	Multiple visitor sign outs	Sign out multiple visitor at a single click
5.	Visitor sign in and sign out	Sign in and sign out using barcodes, USB readers or manually
6.	Visitor history	Have in-depth history of all Visitors who have gone in and out at your fingertips

12. Electromagnetic lock with Exit switch – Double door		
Sl. No	Item Specification	Item Description
1.	Holding Force	600 lbs. minimum x 2 for Double door
2.	Protection level	Flame, tamper proof, weather proof
3.	Operating voltage	Dual voltage selectable (12 VDC or 24 VDC)
4.	Operating Mode	Automatic release by powering off
5.	Monitoring	Feature to monitor door sensor for door status
6.	Features	Built-in Door Status sensor with voltage spike suppressor
7.	Certification	UL/CE Certified (Bidder to attach documentary evidence).
8.	Mounting Accessories	EM Lock shall be supplied with all required accessories for mounting on double door
9.	Material	Anodized Aluminium casing with anti-rust surface treatment & Anti- tamper jam nuts
10.	LED indication	RED/GREEN LED indication for EM lock status
11.	Emergency Exit switch	Exit switch with glass enclosure with mechanism to open the doors from inside in case of emergency situations and reader failure.
12.	Environmental	0° to 50° C and RH of 10% to 90%

13. Exit button		
Sl. No	Item Description	Item Specification
1.	Current rating	3A @ 36VDC
2.	Suitable for door	Hollow door
3.	Operating temperature	0- 50 degree Celsius
4.	Operating humidity	0-95% (relative humidity)
5.	Standard structure	Stainless steel
6.	Mechanical life	500000 times
7.	Input voltage	DC 12 V
8.	Operation	push button
9.	Output contact	NO

14. Break glass Emergency door release		
Sl. No	Item Description	Item Specification
1.	Current ratings:	12 / 24 VDC 10A
2.	Net weight:	160 gms
3.	Colors available	Red, green, white, yellow, blue
4.	Transparent cover	Optional
5.	Connections Terminal	As per requirement
6.	Size	88 x 88 x 55 mm

15. CAT 5 / CAT 6 Ethernet Cable		
Sl. No	Item Description	Item Specification
1.	Color code	Blue / White - blue, Orange / White-orange, Green / White-green, Brown / White – brown
2.	Type of conductors	4 pair 23 AWG conductors
3.	Operating temperature	0° - 50° Celsius or better

16. Custom made photo display controller processor unit		
Sl. No	Item Description	Item Specification
1.	Photo display unit should have	Real-time identification and monitoring

2.	Identify the card holder	Instantly identify the card holder by comparing the card holder and photo displayed on the screen
3.	Card holder information	Complete card holder information on the LCD screen that comprises of card holder name, card code, transaction status with the color indication along with the photograph

17. Data Interface Module for photo display

Sl. No	Item Description	Item Specification
1.	Interface Module for photo display usage	Data to be interfaced with this Interface Module for photo display

18. Photo Display Module Client for Photo display on external monitor integrating to our platform

Sl. No	Item Description	Item Specification
1.	Photo Display Module Client usage	Photo Display Module Client for Photo display on external monitor integrating to our platform

19. 21" TV Monitor ,Display systems- Photo display monitor system integrated with smart card operated swing gate barrier

Sl. No	Item Description	Item Specification
1.	Size	21" TV monitor
2.	Usage	Display systems- Photo display monitor system
3.	Monitor system feature	Should be integrated with our smart card operated swing gate barrier

20. 2.5 mtr HDMI cable for monitor and photo popup board

Sl. No	Item Description	Item Specification
1.	HDMI cable used for	HDMI cable for monitor and photo popup board
2.	Length	2.5 meters each
3.	Quantity	6 nos. of 2.5 meters

21. Customized Mounting Plates, for photo popup monitor

Sl. No	Item Description	Item Specification
1.	Mounting Plates must be	Customizable Mounting Plates for photo popup monitor

22. 24 Port L2 Network switch		
Sl. No	Item Description	Item Specification
1.	Type	Manageable
2.	Form factor	19 inch rack mountable
3.	Copper port (10/100/1000 Base T in RJ45 connector)	At least 4 nos. of 1000 base X SFP ports populated with 4 nos of LX-SFP transceiver
4.	Operating temperature	0 - 50 deg Celsius or better
5.	Protect class	IP30

23. Swing Gate Barrier		
Sl. No	Item Description	Item Specification
1.	SSTT's Size	1210 x 185 x 980 mm
2.	SSTT's Unlock time	0.2s
3.	SSTT's Pass Rate	35 persons / minute
4.	SSTT's Pass width	<600mm
5.	SSTT's Input	100V~240V
6.	SSTT's Motor voltage	24V
7.	SSTT's Environment	-25 to +70 deg Celsius
8.	SSTT's Power consumption	35W
9.	SSTT's Ingress Protection	IP65
10.	Wide lane's Size	1500 x 180 x 1020 mm
11.	Wide lane's Unlock time	0.2s
12.	Wide lane's Pass Rate	35 persons / minute
13.	Wide lane's Pass width	<900 mm
14.	Wide lane's Input	100V - 240V
15.	Wide lane's Motor voltage	24V
16.	Wide lane's Environment	-25 to +70 deg Celsius
17.	Wide lane's Power consumption	35W
18.	Wide lane's Ingress Protection	IP65

24. Customized Mounting Box for ID15 Biometric		
Sl. No	Item Description	Item Specification
1.	Mounting Box	Customized Mounting Box for ID15 Biometric

25. Accessories for biometric access control system		
Sl. No	Item Description	Item Specification
1.	Bracket for Electromagnetic lock	As required.
2.	PVC- Conduit	As required. Material-PVC Size-25 mm Type-Medium
3.	Casing Caping,1 Inch	As required. Features- Unbreakable Colour- White Usage- Electric wire installation Size- 1 inch Material- PVC
4.	Casing Caping, half Inch	As required. Features- Unbreakable Colour- White Usage- Electric wire installation Size- half inch Material- PVC
5.	Flexible Conduit	As required. Material-PVC Size-25mm Application- Electrical Colour- Black Shape- Round
6.	25mm PVC Clamp	As required.
7.	Cable Ties	As required.
8.	RJ-45 Connector	As required. LAN category - Cat6/5e Pin type- 8 pin Connector Gender- Male IP rating- Indoor
9.	Selfthred Screws Box	As required. Size- 8 mm Material-SS Usage- Industrial Type of Head- Round Finish- Polished
10.	PVC Bends	As required.
11.	PVC Collars	As required.
12.	Junction Box	As required. No.of ways- 04 way Shape- Round Usage- Electric fitting Product type- junction box Colour- black Material- PVC Diameter- 65 mm

		Height- 32mm
13.	3 Module Back Box with face plate to mount 1 switch and 1 socket- PVC	As required.
14.	Switch Socket	As required. Current Rating- 10A Pin type- 5 Pin socket No. of Modules- 1M Circuit type- 1Way Color- Multicolor Voltage-240V Socket with shutter- yes Material- Plastic
15.	Electrical Switches	As required. Circuit type- One way Switch type- Non modular switch Material- Polycarbonate Power- 240V Frequency-50Hz Phase- Three Phase Current

26. Passive components		
Sl. No	Item Description	Item Specification
1.	4 Core Cable	As required. Voltage Grade- 300/500 V Sheathing - Frls Shielding- Foil Core- 4 core conductor type- Flexible copper Insulation - PVC Size- 0.75 sq. mm
2.	8 Core Cable	As required. Size-0.75 Sq. mm. conductor type- Flexible copper Voltage grade- 300/500 V Sheathing - FRLS Core- 8 Core Insulation- PVC Shielding - Foil
3.	3 Core Cable	As required. Size-0.75 Sq mm conductor type- Plain Annealed High Conductivity Flexible Copper Voltage grade- 300/500 V Sheathing - FRLS PVC Core- 3 Core Insulation - PVC Type A

27.Replacement of existing and Installation of new BACS.		
Sl. No	Item Description	Item Specification
1.	Replacement of existing BACS	All readers along with turnstile to be replaced with new one.
2.	Biometric Reader installation	Installation configuring and commissioning to be done for all readers which will be procured.
3.	Implementation charge of the system Software	Implementation of system software includes installation of software, commissioning and also basic training of the software to be given to LEOS personnel.
4.	Electromagnetic Lock installation	Installation, Configuration & Commissioning of Electromagnetic Lock
5.	Exit Switch installation	Installation, Configuration & Commissioning of Exit Switch
6.	Break Glass installation	Installation, Commissioning & Configuration of Break Glass
7.	Cable Laying and conduit laying	Cable Laying conduit laying charges also included in the installation charges
8.	Photo popup Unit installation	Installation, Configuration & Commissioning of Photo popup Unit
9.	Project Management Services	Project Management Services also included in the installation
10.	3 module switch box	Installation & Commissioning of 3 module switch box
11.	Swing gate barrier installation	Installation should also include civil work

Terms & Conditions

Sl. No	Description
1.	The extent of the contract works shall include necessary cabling to interconnect the central equipment, hardware and devices to provide the performance as per specification.
2.	All cable enclosures including conduits, cable trays, ducts, wall boxes, termination panels and the like that are required to are part of this contract.
3.	Contractor shall supply necessary accessories to carry out fitting of EM locks, readers, adapters, exit switch, etc. for commissioning of the system.
4.	All proposed security field device installation shall not only operate functionally, they shall also blend with the interior design of the building. All installations carried out shall confirm to the national standards and code of practices.
5.	The Contractor shall ensure that the project must be expandable in the following areas:

	a. The system shall be designated to allow foreseeable organizational changes and procedural changes beyond current plans.
6.	Contractor shall provide site requirements, power supply & environmental requirements, accessories requirements at work site. Vendor shall supply material such as pipe, cables, PVC casing/capping etc. to carry out swing barrier & poles fixation works, fitting of EM locks, readers, adapters, exit switch, etc. for erection and commissioning of the system. Vendor should visit the site and assess the requirement prior to indenting and should accordingly propose the items required.
7.	Contractor shall carry out customization of all the components of hardware and software as per requirements.
8.	IN/OUT description, reader ID, exit switch, etc. shall be marked with suitable size and colour radium stickers at all installed locations of Main gate and second level ACS
9.	Contractor shall ensure the inter-operability & compatibility for all types of readers, Swing gate barrier, software for all requirements, servers, EM locks, printers, PCs, enrolment & personalization stations and interfacing with network
10.	Vendor should not reveal/share information pertaining to this contract for publicity or as a proof of successful execution to any other party without written consent of the Department
11.	Bidder should provide OEM authorization letter for participation in the technical bid (along with the respective datasheets).
12.	The prospective bidder should have experience in the Security Management System business which should be satisfactory. Relevant documents have to be furnished.
13.	The Bidder must not be blacklisted by any Central / State/ Local Government Organization / Institution/ PSU.
14.	The Bidder should be able to respond and resolve issues within a day.
15.	After supply of all material 80% of the material cost will be paid and the rest 20% payment will be released after successful installation, commissioning & acceptance by concerned engineer.
16.	The entire system should be implemented in maximum 3 to 4 months of Acceptance of Purchase Order.
17.	The Bidder shall upon completion of the installation has to provide complete onsite training with documentations on configuration, operation and maintenance of the system to the concerned people from LEOS.
18.	Training should include understanding of the system, working concepts and basic trouble shooting guidelines.
19.	Training for security personnel (CISF) on basic operation of swing gate barrier at gate and administrations staff for enrollment and personalization. It should cover aspects concepts related to emergency exit, exigency operation, etc,. The training shall be completed within a week.

20.	Contractor must ensure comprehensive on-site warranty for ONE YEAR as company warranty from the effective date of acceptance of the entire system by the Department.
21.	Warranty shall include preventive & unlimited break-down maintenance calls including repair/replacement of material, spares, modules, software, etc.
22.	Contractor shall supply replacement of spare/item of same make and model against faulty component during warranty. In case the manufacturer discontinues any model, Contractor shall supply spare/item with higher model of supplied make with better specifications at no extra cost and ensure that it gets integrated within the system.
23.	All the mechanical parts of the system like readers, Swing gate barrier, EM locks, printers, exit switches shall be maintained periodically by cleaning, lubricating and alignment as applicable. Wear out mechanical parts should be replaced.
24.	During warranty the contractor will be required to carry out maintenance and repairs free of cost including replacement of spares/equipment without any additional cost. However, any storage media like Hard Disk, CD or Tape, if found defective, the same shall remain as property of LEOS as per ISRO's IT Security guideline. Vendor shall replace such faulty items based on diagnosis without taking it outside the campus.
25.	During Warranty period of one year the contractor shall deploy ONE trained Resident Technical Engineer at site for the operation and maintenance of BACS. They shall generally be available on all working days 30 minutes before and after the office hours i.e; 08:00 hrs to 17:30 hrs and on other days if any breakdown or preventive maintenance activities are scheduled.
26.	Deployed Resident Technical Engineer shall perform:
	a. Management of the spare parts, materials and consumables.
	b. Periodical database back-up and preparation of weekly, monthly and quarterly report on system performance in prescribed format.
	c. Any other related work assigned by LEOS from time to time
27.	DOS/ISRO reserves the right to disqualify any Resident Technical Engineer deputed, for reasons like technical incompetence, indiscipline, irregularity, insincerity, disobedience, doubtful credentials/ integrity, etc.
28.	Interested prospective bidders are advised to go through the Tender documents carefully before participating in the bid. Vendors are requested to visit LEOS for better understanding of the requirement within 15 days of release of tender.
29.	Deliverables by the Vendor: a) All the hardware components as per the Bill of Material b) Brochure/datasheet of the hardware components c) OS license for the servers, Microsoft office license and other software licences if any.

	<p>d) Software Requirement Specification, Software Design Document and Software procedure manual.</p> <p>e) Source code & documentation for the software developed by the vendor for LEOS.</p> <p>f) Installation and User manual.</p>
--	--