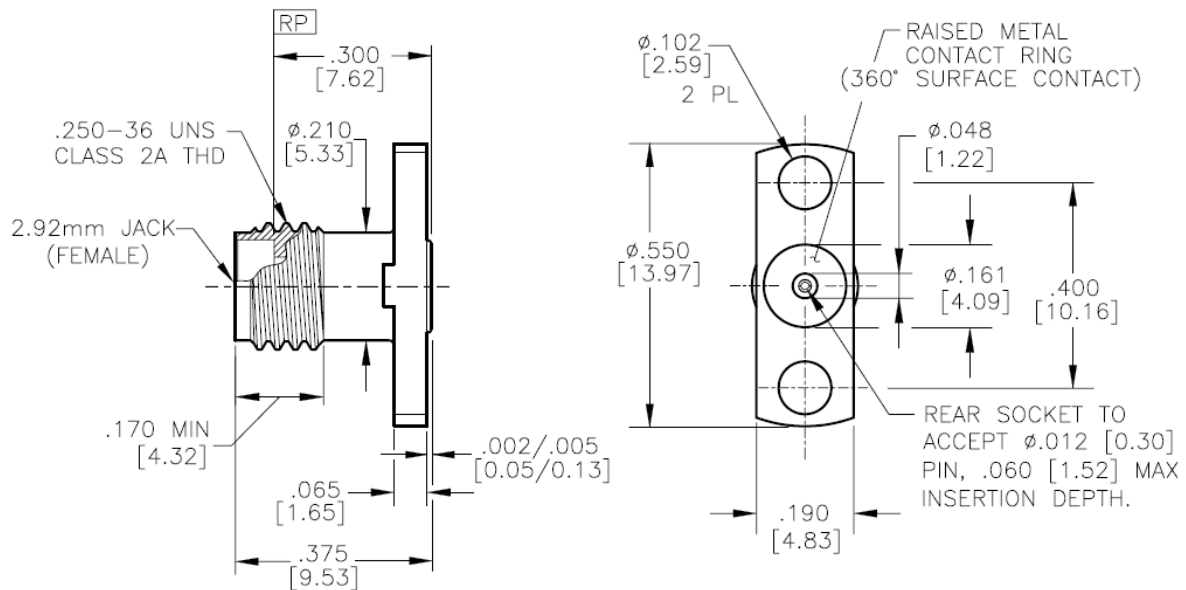


2.92mm-Female Connector 2-Hole Flange Mount

Item description			
Sr. No.	Item	Description	Vendor Compliance
1.	2.92mm Jack 2-hole 0.55"long Flange	Housing: Stainless Steel, Passivated finish accepts pin diameter of 0.012"	
2.	Launch pin	Gold Plated Be-Cu pin, 0.012 inch diameter and 0.225"long	
3.	Dielectric	Virgin PTFE, 0.187"long accepts pin diameter of 0.012"	
Specifications			
4.	Nominal Impedance	50 ohms	
5.	Frequency	DC to 40.0 GHz	
6.	RF leakage	$\leq -(120-f_{GHz})\text{dB}$	
7.	VSWR	DC to 18.0 GHz: 1.10:1 max	
		18.0 to 40.0 GHz : 1.15:1 max	
8.	RF Insertion Loss	$\leq 0.035*\sqrt{f_{GHz}}$	

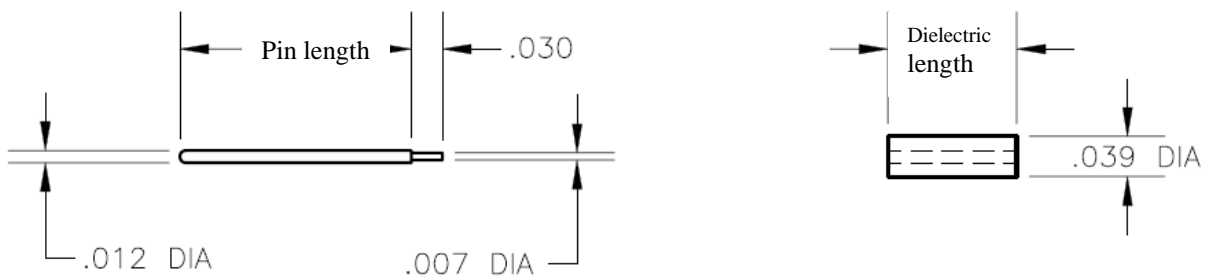
Mechanical Drawing (for reference only)

Flange Dimensions:



Note: All Dimensions are in inches. Dimensions shown in brackets [xxx] are in mm.
: All Dimensional Tolerances are ± 0.02 mm.

Pin & Dielectric Dimensions:



Pin length: 0.225"

Dielectric length: 0.187"

Note: All Dimensional Tolerances are ± 0.02 mm.